

EXPERIENCE

Japan

JTB

Perfect moments, always

July 2024 – June 2025

TRAVEL TO Japan ANYTIME OF THE YEAR

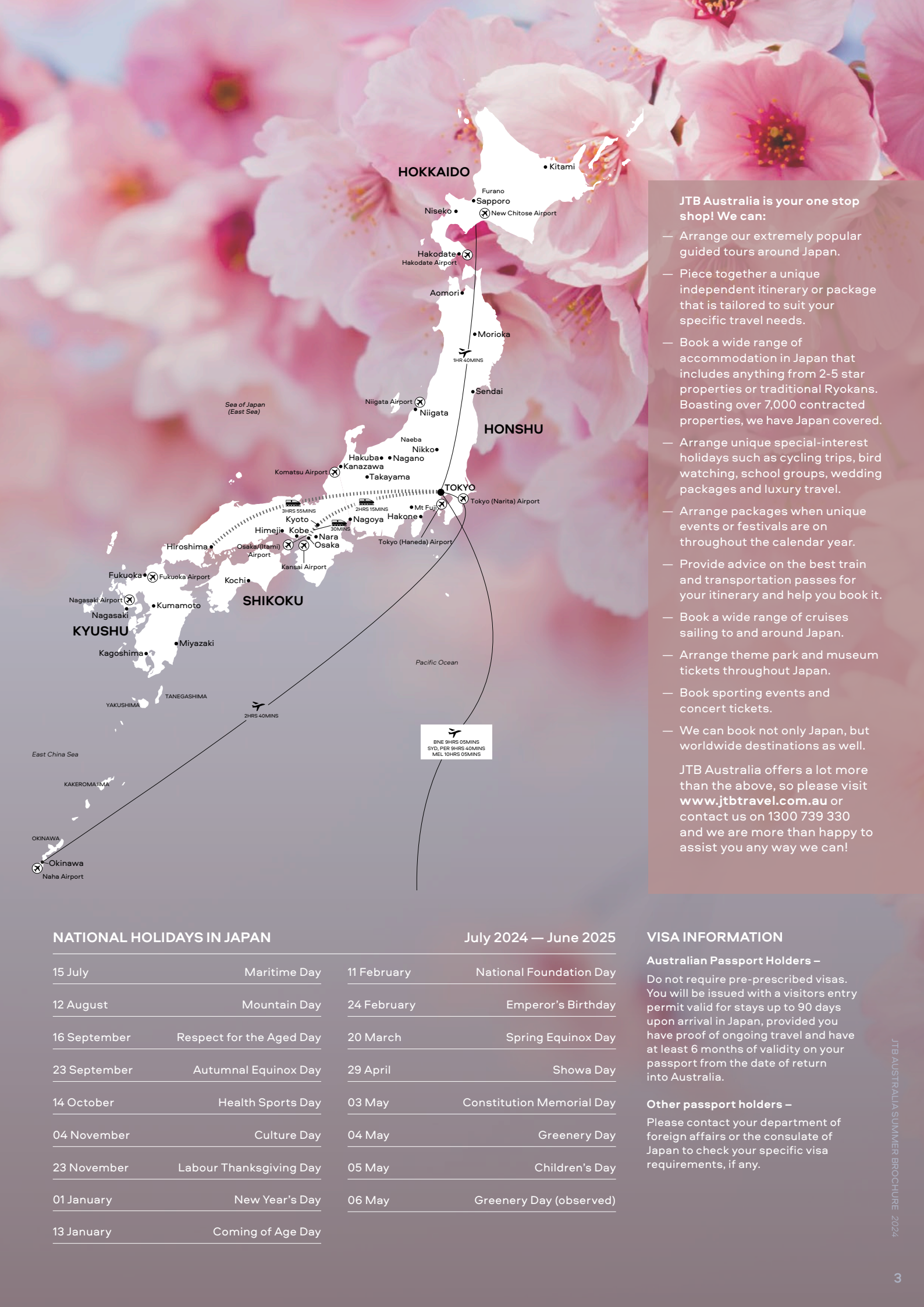
From the bustling metropolis of Tokyo to the sweet sea breeze of Okinawa, the islands of Japan are a diverse and magnificent wonderland of sightseeing bliss. Since our inception in 1912, we have made it our mission to provide you with the most comprehensive and intuitive travel experiences all over Japan.

Whether you're an independent traveller, corporate traveller or a family looking to explore Japan, we relish the opportunity to share the wealth of knowledge that we have culminated over more than a century of doing what we do, and that is being the Japan travel experts.

Our goal is to provide you with attentive service that you can rely on, paired with the most comprehensive travel advice and the widest range of Japan travel packages. If you are looking for something more than a holiday, let our team of Japan experts create a unique, personalised and completely unforgettable Japan travel experience.

Contents

Introduction to Japan	2	Off the Beaten Track	10	Western Japan	23
Holiday Planning Map of Japan	3	Tokyo Day Tours and Properties	12	Shikoku	24
Japan Rail Passes	4	Kyoto Day Tours and Properties	14	Kyushu	25
Japan Guided Packages	5	Mt. Fuji and Hot Springs	16	Sugoi Japan – Pop Culture	26
Independent Suggested Itineraries	6	Osaka	17	Universal Studios Japan	27
Airport Transfers and Hotels	8	Hokkaido	21	Conditions	28
Food Tours	9	Tohoku	22	Ski Japan	30



JTB Australia is your one stop shop! We can:

- Arrange our extremely popular guided tours around Japan.
- Piece together a unique independent itinerary or package that is tailored to suit your specific travel needs.
- Book a wide range of accommodation in Japan that includes anything from 2-5 star properties or traditional Ryokans. Boasting over 7,000 contracted properties, we have Japan covered.
- Arrange unique special-interest holidays such as cycling trips, bird watching, school groups, wedding packages and luxury travel.
- Arrange packages when unique events or festivals are on throughout the calendar year.
- Provide advice on the best train and transportation passes for your itinerary and help you book it.
- Book a wide range of cruises sailing to and around Japan.
- Arrange theme park and museum tickets throughout Japan.
- Book sporting events and concert tickets.
- We can book not only Japan, but worldwide destinations as well.

JTB Australia offers a lot more than the above, so please visit www.jtbtravel.com.au or contact us on 1300 739 330 and we are more than happy to assist you any way we can!

NATIONAL HOLIDAYS IN JAPAN

July 2024 — June 2025

15 July	Maritime Day	11 February	National Foundation Day
12 August	Mountain Day	24 February	Emperor's Birthday
16 September	Respect for the Aged Day	20 March	Spring Equinox Day
23 September	Autumnal Equinox Day	29 April	Showa Day
14 October	Health Sports Day	03 May	Constitution Memorial Day
04 November	Culture Day	04 May	Greenery Day
23 November	Labour Thanksgiving Day	05 May	Children's Day
01 January	New Year's Day	06 May	Greenery Day (observed)
13 January	Coming of Age Day		

VISA INFORMATION

Australian Passport Holders –

Do not require pre-prescribed visas. You will be issued with a visitors entry permit valid for stays up to 90 days upon arrival in Japan, provided you have proof of ongoing travel and have at least 6 months of validity on your passport from the date of return into Australia.

Other passport holders –

Please contact your department of foreign affairs or the consulate of Japan to check your specific visa requirements, if any.

Japan

RAIL PASSES

Your key to convenient sightseeing in Japan!

A Japan Rail Pass is one of the most convenient ways to get around Japan, giving you access to bullet trains, buses, JR local trains and a ferry. Japan Rail Passes are available to travellers visiting Japan with a tourist (temporary visitor) visa. They are not available for working holiday or student visa holders. The trains are comfortable, clean and easy to ride so sit back, relax and enjoy Japan as you glide across the country.



National Japan Rail Pass

This pass covers the entire Japan Railway JR system including some buses and a ferry. You are able to travel everywhere in Japan using this pass. Choose between 7, 14 and 21 day consecutive passes. Each are available in Economy (Ordinary) and Green (Executive) Class.

TYPE	ECONOMY	GREEN
7-day Pass	\$483	\$677
14-day Pass	\$773	\$1,063
21-day Pass	\$967	\$1,353

Regional JR Passes

A number of regional JR passes providing excellent value for money are also available, including JR Hokkaido, JR West, JR Shikoku and JR Kyushu. Please see pages 21 through 25 for recommended regional sightseeing of Japan using these passes!

Train sector fares

JTB can arrange most train sectors, subject to availability at time of booking. Prices are subject to change at time of booking.

TYPE	ECONOMY
Tokyo – Kyoto	\$202
Tokyo – Shin Osaka	\$209
Tokyo – Hiroshima	\$282
Kyoto – Hiroshima	\$169

Prices are based on low season, reserved seats, ordinary class trains. Train tickets are only sold in conjunction with at least 1 night of accommodation booked through JTB, for a stay PRIOR to the first train journey, in order to securely deliver physical tickets locally.

Pocket Wifi

JTB can organise local pocket Wifi devices, without the need to drain your mobile data or face international roaming fees. These devices grant you near constant connectivity, wherever you are in Japan, ensuring your loved ones can always reach you. These can either be delivered to your local hotel, or to a major airport counter for collection on arrival. Up to 5 devices can be connected at any one time, with lightning fast speeds and unlimited data.

PRICES START FROM \$41 for one day, or up to \$238 for 31 days.

- * For current prices, all pass types and conditions, please visit www.jtbtravel.com.au where passes can be ordered online.
- * If you require the passes to be sent out to you, postage and handling charges will apply.
- * Seat reservations can be made once in Japan at no extra cost.
- * Children's (6 to 11 years) Passes are also available at 50% of the adult price.
- * Shinkansen (Super Express Bullet trains) can be used with the Japan Rail Pass. Travel on the Nozomi Bullet trains is permitted with your JR Pass, at additional cost on the spot.

JAPAN'S LANDSCAPES AND MT. FUJI – 15 DAYS – OPERATES EVERY MONDAY

FROM \$7,804 per person twin share

Important: These tours include sightseeing right from the get-go, and conclude at the end of the day on Day 15; we recommend that you add an additional night pre and post tour to get the most of your trip!



ITINERARY

DAY 1: WELCOME TO JAPAN! TRANSFER BY COACH TO THE HOTEL

Upon your arrival in Japan, the adventure begins with a seamless transfer by coach to your hotel. As you settle in, anticipation builds for the journey ahead, promising a blend of modernity and tradition unique to Japan.

In the evening you will meet with your guide. The first destination is Shinjuku, the vibrant district where you'll experience bustling crowds navigating one of the world's busiest commerce and nightlife districts, which can offer a glimpse into Tokyo's energetic after-hours scene. Dinner will be served, providing a taste of Japan's culinary delights, before we return to the hotel with our guide.

DAY 2: TOKYO

The morning starts with a comprehensive 5-hour tour led by our guide, unveiling the wonders of Tokyo. We begin at Zojoji Temple for a snapshot of Tokyo Tower against the city skyline. Here, Jizo statues stand as protective deities, guiding travellers and imparting strength to the vulnerable.

Next, we delve into Shibuya's iconic Scramble Crossing, witnessing its controlled chaos. Continuing along Omotesando's elegant boulevard, before we admire the Imperial Palace's serene beauty and the historic Nijubashi Bridge. A journey through Akihabara reveals Tokyo's anime and electronics hub, contrasted with the Sensoji Buddhist Temple Complex in Asakusa. Free time allows exploration of Nakamise traditional market street. Lunch is provided at a local restaurant, ensuring a taste of authentic Japanese cuisine before returning to the hotel for leisure time.



Japan

GUIDED PACKAGES

Our fully guided tours cover the major highlights of Japan, and are guaranteed to operate with no minimum numbers! We are here to provide you with the easiest way to see Japan, with your hand held every step of the way.

DAY 3: TOKYO-KYOTO

After breakfast, we board the bullet train to Kyoto, a city untouched by World War II's devastation, preserving its cultural heritage. Sights include Fushimi Inari Shrine, famed for its torii gates, and Kinkakuji Temple, the "Golden Pavilion" set amidst enchanting gardens. Free time precedes an evening in Gion, Kyoto's geisha district, offering a glimpse into traditional Japanese culture.

DAY 4: KYOTO-NARA-OSAKA

Our journey to Nara, a former capital of Japan, features Todaiji Temple, housing a colossal Buddha and freely roaming friendly deer in its park. We will have lunch before visiting Horyuji Temple, an ancient Buddhist complex showcasing Japan's architectural legacy.

In Osaka, the evening brings us to Dotonbori, a vibrant district brimming with nightlife and culinary delights, offering a taste of Osaka's energetic spirit.

DAY 5: OSAKA-HIMEJI-KORAKUEN GARDEN-OKAYAMA

Departing for Himeji, we explore Himeji Castle, a national treasure renowned for its elegant architecture. After lunch at a local eatery we proceed to Korakuen Garden in Okayama, celebrated for its scenic landscapes and tranquil teahouses. Our journey concludes at Kibitsu Shrine, dedicated to the guardian deity Kibitsu-hiko-no-Mikoto, before leisure time in Okayama.

DAY 6: OKAYAMA-KURASHIKI-HIROSHIMA-ITSUKUSHIMA-HIROSHIMA

Kurashiki charms with its preserved historical district and canals before our journey continues to Hiroshima. Here, the Peace Memorial Park and Museum pay homage to the city's poignant history. A ferry ride transports us to Itsukushima Island (Miyajima), home to the iconic Itsukushima Shrine. The day concludes with dinner and relaxation back at our Hiroshima hotel.

DAY 7: HIROSHIMA-MATSUYAMA

Next, take a short ferry to Shikoku Island, offering scenic views of Japan's archipelago. In Matsuyama, a cable car ascends to its castle, followed by a visit to Ishiteji Temple, a revered pilgrimage site. Afternoon leisure is enhanced by a visit to Dogo Onsen, a historic hot spring bathhouse dating to the 19th century.

DAY 8: MATSUYAMA-KOTOHIRA-TAKAMATSU-NARUTO-KOBE

Departing for Kotohira, we visit the Shinto shrine Komyo-san, dedicated to seafaring deities. Lunch is served in Takamatsu, followed by a stroll through Ritsurin Garden's meticulously landscaped grounds. Crossing the Naruto Bridge offers panoramic views of its whirlpools, en route to Kobe for an overnight stay.

DAY 9: KOBE-OSAKA-MOUNT KOYA

Kobe's Earthquake Memorial Museum offers insight into the city's resilience. Journeying onward to Osaka, we ascend Mount Koya, a sacred site of Shingon Buddhism. Here, Kongobuji Temple and Okuno-in Mausoleum provide spiritual solace amid serene surroundings. Accommodation is in a monastery, offering a Zen meditation experience (Ajikan) and vegetarian dinner.

Note: On some dates, the Earthquake Museum may be changed for the Sake Museum or a climb up Kobe Tower.

Note 2: We consider the sojourn at the monastery as an experience of great existential value. The rooms at this place are modest, without bathrooms, in the traditional Japanese style with tatamis. Bathrooms are communal.

DAY 10: MOUNT KOYA-KYOTO

Morning meditation and breakfast at the monastery precede our return journey to Kyoto. Enjoy a free day to explore Kyoto's treasures independently, guided by our expert's recommendations.

DAY 11: KYOTO-TSUMAGO-MATSUMOTO-NAGANO

Travelling to Tsumago, we explore the picturesque wooden houses of the Nakasendo Trail and visit Matsumoto Castle, a stunning example of 16th-century architecture. Nagano offers an evening retreat, perfect for relaxing and reflecting on our journey thus far.

DAY 12: NAGANO-MONKEY PARK-KUSATSU-IKAHO ONSEN

In Nagano, Zenko-ji Temple invites contemplation, followed by the unique Jigokudani Monkey Park, where Japanese macaques bathe in natural hot springs. Our route continues through scenic mountain vistas to Kusatsu, renowned for its therapeutic hot springs. Ikahe Onsen offers an evening in a ryokan, complete with traditional Japanese hospitality and cuisine.

DAY 13: IKAHO-NIKKO-TOKYO

Journeying to Nikko, we visit Nikko Toshogu Shrine and Taiyuinbyo Mausoleum. After a serene riverside stroll, return to Tokyo for an evening arrival.

DAY 14: TOKYO-KAMAKURA-ENOSHIMA-ODAWARA

Day trip to Kamakura includes Hokuoku-ji Temple's bamboo forest and the Great Buddha of Kamakura. Enoshima offers seaside relaxation, with Odawara Castle's imposing presence capping off the day.

DAY 15: ODAWARA-OWAKUDANI-OSHINO HAKKAI-KAWAGUCHIKO-MT. FUJI-TOKYO

Our final day journeys through Hakone's volcanic landscapes, including Owakudani's sulfurous springs and Oshino Hakkai's serene ponds. A boat ride on Lake Kawaguchi offers views of Mt. Fuji, concluding our journey full circle back in Tokyo.

Notes:

Access is sometimes closed due to high volcanic activity or toxic gases, in which case we would include the Arakurayama Sengen park.

In winter, the climb to Mt. Fuji is often closed by snow or other weather conditions; if this is so, we will go as far as we are authorised.



WANT TO EXPLORE

Japan

IN YOUR OWN TIME?

Independent Suggested
Itineraries

MUST SEE Japan

13 DAYS

FROM \$3,461 per person twin share

INCLUSIONS

12 NIGHTS ACCOMMODATION

7-DAY NATIONWIDE JR PASS
(DAYS 5-11)

ARRIVAL AND DEPARTURE
AIRPORT TRANSFERS

SUGGESTED ITINERARY

DAY 1: TOKYO

Arrive into Narita/Haneda Airport in Tokyo and transfer into the city by shared/private bus transfer. Stay in Tokyo for 3 nights.

DAY 2: TOKYO

Get introduced to the sights of Tokyo including Tokyo Imperial Palace and Tokyo Tower with a 1-Day Tokyo Panoramic Sightseeing Tour.

DAY 3: TOKYO

Entire free day to explore Tokyo at your own leisure. Suggested optional activities:

- Tokyo Disneyland or DisneySea
- Teamlab Planets
- 1-Day Nikko Sightseeing Tour from Tokyo

DAY 4: HAKONE

Visit the world-famous Mt. Fuji and Hakone's Lake Ashi via our 1-Day Mt. Fuji and Hakone Tour before being dropped off at a traditional Japanese ryokan in nearby Hakone. Stay in Hakone for 1 night.

DAY 5: TAKAYAMA

Exchange your JR Pass in Odawara before travelling into the mountains of Takayama. Take a walk around Takayama to discover historical gems such as Takayama Jinya, San-machi Traditional Building Preservation Area, Hida Folk Village and Takayama Festival Museum. Stay in Takayama for 1 night.

DAY 6: KANAZAWA

Explore the diverse Takayama morning market before travelling by train to Kanazawa. Points of interest here include Kenroku garden, Higashi Chaya District, Nagamachi Samurai District and Omicho Fish Market. Stay in Kanazawa for 1 night.

DAY 7: KYOTO

Travel by train to Kyoto. Free afternoon to explore Kyoto. Suggested optional activities:

- Tea Ceremony Experience with Kimono Wearing
- Family Ninja Experience
- Kyoto Afternoon Tour including Fushimi Inari Shrine
- Stay in Kyoto for 2 nights.

DAY 8: KYOTO AND NARA

Get introduced to the sights of Kyoto and Nara including Ginkakuji Temple and Nara Park with a 1-Day Kyoto and Nara Sightseeing Tour.

DAY 9: HIROSHIMA AND HIMEJI

This morning depart for Hiroshima stopping at Himeji by bullet train. Points of interest in Himeji include UNESCO Heritage Himeji Castle and Kokoen Garden. Continue by bullet train to Hiroshima. Stay in Hiroshima for 2 nights.

DAY 10: HIROSHIMA AND MIYAJIMA

Get introduced to the sights of Hiroshima and Miyajima Island including the Hiroshima Peace Museum and Itsukushima Shrine with a 1-Day Hiroshima and Miyajima Sightseeing Tour.

DAY 11: OSAKA

Depart Hiroshima at leisure and travel by bullet train to Osaka. Points of interest here include Osaka Castle, Osaka Museum of History, Shitenno-ji Temple and Namba Area. Accommodation in Osaka for 2 nights.

DAY 12: OSAKA

Entire free day to explore Osaka. Suggested optional activities:

- Universal Studios Japan
- Dotonbori and Shinsekai Food Tour
- 1-Day World Heritage Site Mount Koya Tour (self-guided).

DAY 13: OSAKA

Package concludes with shared/private transfer to Kansai/Itami Airport.

Need more flexibility and freedom in your itinerary? Look no further!

We book your accommodation and tours, you make your own way between cities

We can modify these flexible itineraries to suit your needs.

These packages give you the freedom to explore Japan the way you want

Special airfares in conjunction with any land packages are available

Not what you are looking for? JTB can design a tailor made itinerary.

Airport

TRANSFERS AND HOTELS

TOKYO NARITA AND HANEDA AIRPORT TRANSFERS

Green (Amazing) Tomato Shared Airport Shuttle

Door to door shuttle service to all Tokyo city accommodation.

*Conditions apply

Narita Airport to Tokyo city accommodation

ONE WAY — \$103 Per Person

Haneda Airport to Tokyo city accommodation

ONE WAY — \$82 Per Person



KANSAI AND ITAMI OSAKA AIRPORT TRANSFERS

Airport Bus

Pre paid Airport bus coupon

Kansai Airport to Kyoto (approx 100mins)

ONE WAY — \$33 Adult / \$17 Child (6-11yrs)

Green (Amazing) Tomato Airport Shuttle

Door to door shuttle service to Osaka hotels.

*Conditions apply

Kansai Airport to Osaka

ONE WAY — \$75 Adult / \$75 Child (6-11yrs)

PRIVATE transfer options also available, conditions apply for all transfer service types. Contact JTB directly for details.

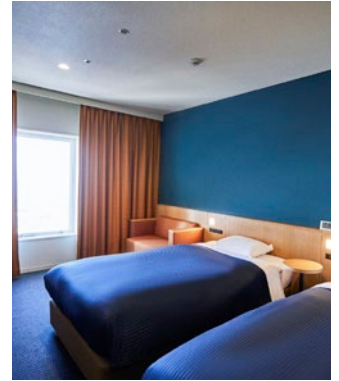


HILTON NARITA AIRPORT

Modern, luxurious and convenient, Hilton is an excellent choice for your stay in Narita or your transit through the airport. There is a courtesy bus that will transport you to Narita within 15 minutes.

◆◆◆◆ 4 STAR

FROM \$306 per room per night twin share

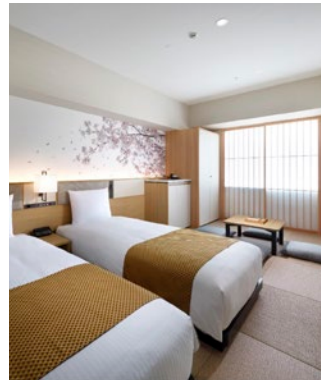


KANSAI AIRPORT WASHINGTON HOTEL

This hotel enjoys a favourable location, only 15mins by complimentary shuttle bus. The interior of the hotel is minimal and well executed, providing a nice area to relax after a long flight.

◆◆◆ 3 STAR

FROM \$128 per room per night twin share

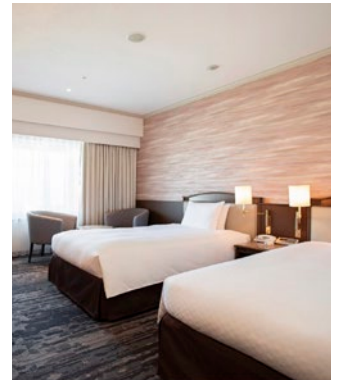


HOTEL VILLA FONTAINE GRAND HANEDA

Located inside Haneda Airport Garden, the major shopping complex connected to Haneda Airport T3. Perfect for stopovers, overnight connections, and access into Tokyo city.

◆◆◆◆ 4 STAR

FROM \$346 per room per night twin share



HOTEL NIKKO KANSAI AIRPORT

Directly connected to Kansai airport, enjoy a sophisticated environment for your transit. There are several restaurants to choose from that serve Chinese, Teppanyaki and Western cuisine.

◆◆◆◆ 4 STAR

FROM \$248 per room per night twin share

Food

TOURS



TSUKIJI FISH MARKET WALKING FOOD TOUR IN TOKYO

FROM \$107 per person

Explore Tokyo's biggest fish market, Tsukiji and try street foods with your guide. Taste fresh sashimi rice bowl at a hidden restaurant in Tsukiji Fish Market for lunch. Go up to the observatory deck and view Tsukiji Fish Market from above!



HALF DAY SUSHI MAKING CLASS IN TOKYO

FROM \$106 per person

Sushi has become a global Japanese dish. However, there are many types of sushi. Nigiri sushi, rolled sushi, chirashi sushi, pressed sushi, and many more. There are countless types of ingredients to put in each. In this lesson, you can make representative sushi such as nigiri sushi, inari sushi, California roll, tekka roll, and kappamaki.



HALF DAY BENTO COOKING CLASS IN KYOTO

FROM \$106 per person

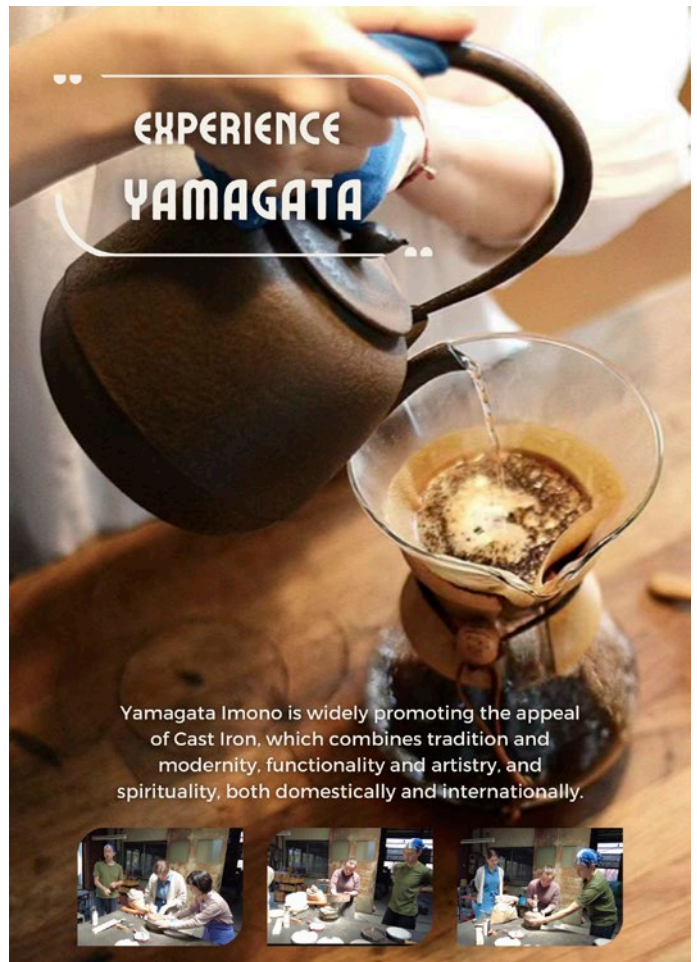
The Morning Bento Class is a great way to learn about typical Japanese dishes such as sushi, tempura and miso soup. In addition, you will learn the cultural background of the well-known Japanese 'Bento'. During the 2.5-3 hour class, we will demonstrate and explain the tricks to making these beautiful dishes and then you will give it a try. After you finish cooking, you will enjoy the bento lunch you just made!



BEST OF KOBE – PRIVATE 5 HOUR WALKING TOUR IN KOBE

FROM \$393 per group (up to 5)

Ever wanted to try the most sought after beef in the world, Kobe beef? Our local tour guide can meet you in Kyoto, Osaka, or Kobe; and take you to a hidden spot known to locals, to experience affordable Kobe beef. Choose in advance between 10,000JPY or 20,000JPY courses (payable on the spot), and we'll make sure you get your money's worth! Our local guide will also take you to sightsee the remarkable city of Kobe, with its many sake brewery districts!



Yamagata Imono is widely promoting the appeal of Cast Iron, which combines tradition and modernity, functionality and artistry, and spirituality, both domestically and internationally.



TRAVEL

Japan

OFF THE BEATEN
TRACK

Experience the cultural heritage, traditions and hospitality of Japan from the comfort of small, intimate groups, to self-guided and custom packages. Focused on getting away from the crowds, Oku Japan has a wide range of itineraries created by those with a passion for Japan and all its hidden beauties.

NAKASENDO SELF-GUIDED WALKING 3 DAYS

FROM \$1,933 per person

Recommended from March to November

INCLUSIONS

2 NIGHTS AT JAPANESE INNS
ALONG THE NAKASENDO TRAIL

2 BREAKFASTS, 2 DINNERS

ROUND TRIP TRAIN TICKETS FROM
KYOTO OR TOKYO TO THE TRAIL

TRAIN TICKETS FOR INTERMEDIATE
JOURNEYS ON THE NAKASENDO
TRAIL

DETAILED DAY-BY-DAY ITINERARY
WITH WALKING DIRECTIONS AND
MAPS



DAY 1: HIKE FROM MAGOME TO TSUMAGO

WALKING DISTANCE: 8.3km/
Approx 3hrs

Take the bullet train to Nagoya then board a local bus to Magome. Walk over Magome Pass to Tsumago, one of the best preserved and most evocative of the Nakasendo trails towns. Spend the night at a family-run Minshuku (inn) with a delicious home-cooked Japanese dinner and breakfast.

DAY 2: HIKE FROM TSUMAGO TO NOJIRI

WALKING DISTANCE: 18.4km/
Approx 6hrs

Today you will hike the sensational track between Tsumago to Nojiri. The trail travels through small valleys and past forests of bamboo and Japanese cedar trees. Continue by train to Kiso-Fukushima. Stay at a traditional ryokan and relax and rejuvenate in their onsen hot spring.

DAY 3: HIKE FROM YABUHARA TO NARAI

WALKING DISTANCE: 6.2km/
Approx 3hrs

You will be driven back to Kiso-Fukushima after breakfast, where you will board a train bound for Yabuhara. Explore this atmospheric village before travelling via train to Tokyo or Kyoto.

KUMANO KODO SELF-GUIDED WALKING 4 DAYS

FROM \$1,922 per person

Recommended from April to November

INCLUSIONS

3 NIGHTS AT JAPANESE INNS ALONG THE KUMANO KODO TRAIL

3 BREAKFASTS, 3 DINNERS

ROUND TRIP TRAIN TICKETS FROM KYOTO OR TOKYO TO THE TRAIL

ROUND TRIP TRAIN TICKETS FROM KYOTO OR OSAKA

DETAILED DAY-BY-DAY ITINERARY WITH WALKING DIRECTIONS AND MAPS



DAY 1: HIKE FROM TAKIJIRI TO TAKAHARA

WALKING DISTANCE: 4.5km/
Approx 2hrs

Travel to the small town of Kii-Tanabe by train, after which you will board a local bus bound for Takijiri. You will begin on the picturesque Nakahechi portion of the Kumano Kodo pilgrimage route, making your way to the beautiful ridge-top village of Takahara. Overnight in a Japanese style inn and enjoy a home cooked dinner featuring local seasonal ingredients.

DAY 2: HIKE FROM TAKAHARA TO CHIKATSUYU

WALKING DISTANCE: 10km/
Approx 4-5hrs

After a Japanese breakfast, follow the trail as it winds through small settlements and the peaceful countryside. You will pass several Oji shrines before descending to Chikatsuyu village. Overnight at a family run Minshuku (inn).

DAY 3: HIKE FROM CHIKATSUYU TO HONGU

WALKING DISTANCE: 7km/
Approx 2hrs

Today, walk a gentle section of the trail from Hosshinmon-oji to the Kumano shrine at Hongu, one of the three 'Grand Shrines of Kumano'. From the Kumano shrine, a short bus ride will bring you to either Yunomine Onsen, one of the oldest natural hot-spring villages in Japan, or to Kawayu Onsen, famous for its thermal water bubbling to the surface of the crystal clear river. Enjoy a relaxing soak in a Japanese bath after your delicious, multi-course Kaiseki style dinner.

DAY 4: HIKE FROM HAYATAMA GRAND SHRINE AND SHINGU

Take the morning to explore the atmospheric village of Yunomine Onsen or Kawayu Onsen. Travel by bus along to Shingu and visit the Kumano Hayatama Taisha, one of the three Grand Shrines of Kumano. The Kamikura Shrine on Mount Gongen, is also well worth a visit. After visiting the sites of Shingu, travel back to Osaka or Kyoto.

HIROSHIMA AND SHIMANAMI KAIDO SELF-GUIDED 6 DAYS

FROM \$4,103 per person twin share

Recommended from March to November 2019

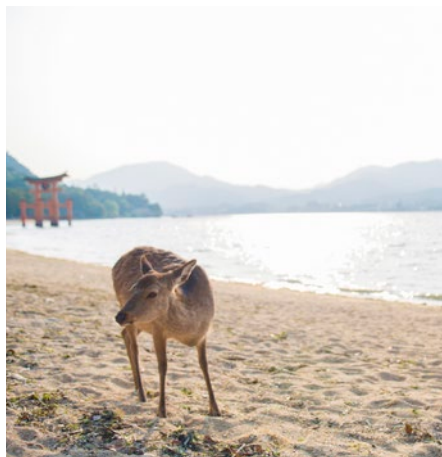
INCLUSIONS

5 NIGHTS AT JAPANESE OR WESTERN STYLE ACCOMMODATION

5 BREAKFASTS, 2-5 DINNERS

ROUND TRIP TRAIN TICKETS FROM KYOTO OR OSAKA

DETAILED DAY-BY-DAY ITINERARY WITH WALKING DIRECTIONS AND MAPS



DAY 1: HIROSHIMA

Arrive at Hiroshima city and stay overnight.

DAY 2: TRAVEL TO MIYAJIMA ISLAND

WALKING DISTANCE: 4.7km/
Approx 2-3hrs

Experience the amazing close-up view of the iconic red Torii Gate of Itsukushima Shrine which appears to float in the water at high tide.

In the afternoon, climb Mt Misen, the highest peak of the island, offering spectacular views of the Seto inland sea. Overnight at a Japanese Inn and enjoy a traditional dinner.

DAY 3: SEA KAYAKING AROUND SENSUIJIMA ISLAND

WALKING DISTANCE: 2km/
Approx 2-3hrs

Travel to Tomonoura Bay, the lovely fishing port town which inspired Studio Ghibli director Hayao Miyazaki when he created the animated film "Ponyo". Enjoy a morning kayak tour around Sensui-jima Island. Overnight at a traditional Japanese Inn.

DAY 4: WALKING IN THE HILLTOPS OF ONOMICHI

WALKING DISTANCE: 4km/
Approx 3-4hrs

Spend the day exploring Onomichi's wonderfully old-fashioned shopping arcades and quiet hilltop back streets. Spend a night at an historic Ryokan inn or a modern, stylish cycling-themed hotel.

DAY 5: CYCLING ALONG THE SHIMANAMI KAIDO

CYCLING DISTANCE: 35-65km/
Approx 3-6hrs

Select your bikes and depart for the first day of cycling. Explore the wonderful nature and relaxing care culture of the inland sea. Spending the night on a remote island which is part-way along the cycling route.

DAY 6: SHIMANAMI KAIDO

CYCLING DISTANCE: 20-45km/
Approx 2-4hrs

Continue along the Shimanami Kaido cycling route, passing through small island settlements with some of the most scenic spots before arriving into Imabari town on Shikoku Island where you will drop off your bike.

NOTE: Elements can be removed or adjusted to suit different levels of fitness. Longer durations of these trips are also available.



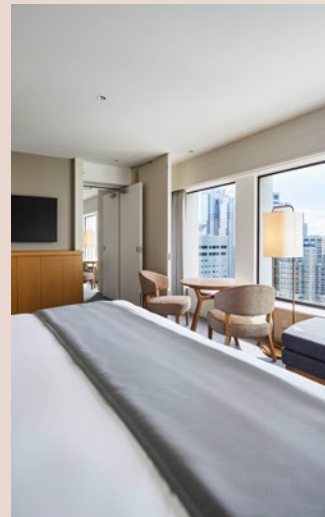
Tokyo

DAY TOURS & PROPERTIES

VIBRANT — METROPOLIS

A
*must-see
destination*

Expansive and diverse, Tokyo is a city unparalleled by the sheer magnitude of its cityscape and its incredible culture, which has been moulded over the better part of nine centuries. Divided into 23 wards, Tokyo is a wandering traveller's boon, a bounty of culturally fascinating, thrilling and quirky sights. These include areas such as Ginza, known for high class shopping, Akihabara, the electronic centre of Tokyo, and Shinjuku, famous for its neon lights and futuristic skyscrapers. Tokyo is also an extremely important figure in Japanese history, with relics of the bygone Edo period on show throughout the city. The most famous of these sights is the Imperial Palace, formerly Edo Castle, which even today is still surrounded by its original innermost moat.



KEIO PLAZA HOTEL
LOCATION: SHINJUKU

FROM \$570 per room per night twin share

The bustling Shinjuku ward leaves you spoiled for choice with plenty of entertainment, shopping and dining options, though the Keio Plaza has more than 29 restaurants and bars itself!

◆◆◆◆ 4 STAR



MIMARU TOKYO STATION EAST
LOCATION: TOKYO STATION

FROM \$564 2BR apartment per night quad share

A chain of apartment hotels, Mimiru are perfect, affordable options for larger groups and families. In the case of Mimiru Tokyo Station East, the majority of the apartments offer multiple bedrooms, for parents looking for a separate sleeping area to their children.

◆◆◆◆ 4 STAR



CHALLENGE SUMO WRESTLERS AND ENJOY SUMO FOOD!

FROM \$156 per person

If you are coming to Japan, you must see a natural interaction of ex-sumo wrestlers performing. On this day, not only will you be watching them perform, but you can also have the chance to put on a sumo suit and wrestle with the wrestler. After you sweat, enjoy Tonkatsu (Japanese Pork Cutlet) and Chanko Nabe soup for lunch. Chanko Nabe is the soul food for sumo wrestlers. They would eat this dish to get bigger every day.

1 DAY WORLD HERITAGE NIKKO WALKING TOUR WITH LUNCH (FROM SHINJUKU)

FROM \$256 per person

A sacred place for Japan's mountain worship, Nikko is home to the "Shrines and Temples of Nikko," a registered World Heritage Site. On this tour, walk around World Heritage component sites such as Nikko Toshogu Shrine together with a National Government Licensed English Guide Interpreter. In small groups, customers go on a course where they can learn more about Japan while listening to explanations in English about Nikko's history, culture, and faith. This tour includes lunch.



TOKYO DISNEYLAND/ DISNEYSEA 1 DAY ADMISSION TICKETS

FROM \$182 per person

A visit to Tokyo is incomplete without a trip to Tokyo Disney Resort! The nostalgia will hit you heavily as you walk the very familiar grounds of Tokyo Disneyland, modelled after the original Anaheim Disneyland; while the very original concept of DisneySea is made for Japan only!

PANORAMIC TOKYO FULL DAY TOUR

FROM \$134 per person

Explore Tokyo city by coach, in this convenient 1 day tour taking you around the city to see the best Tokyo has to offer, including a drive through major districts such as Shinjuku, Ginza and the Imperial Palace Plaza, along with stops at Meiji Shrine, Sensoji Temple and the old town area of Asakusa. Lunch is included on this tour.



YANAKA HISTORICAL WALKING TOUR IN TOKYO'S OLD TOWN

FROM \$110 per person

Feel the Shinto vibe as you cross a vibrant red arch in Nezu Shrine, a portal into another world. Craft a lucky cat for your travel memory in a cafe of an old folk house.

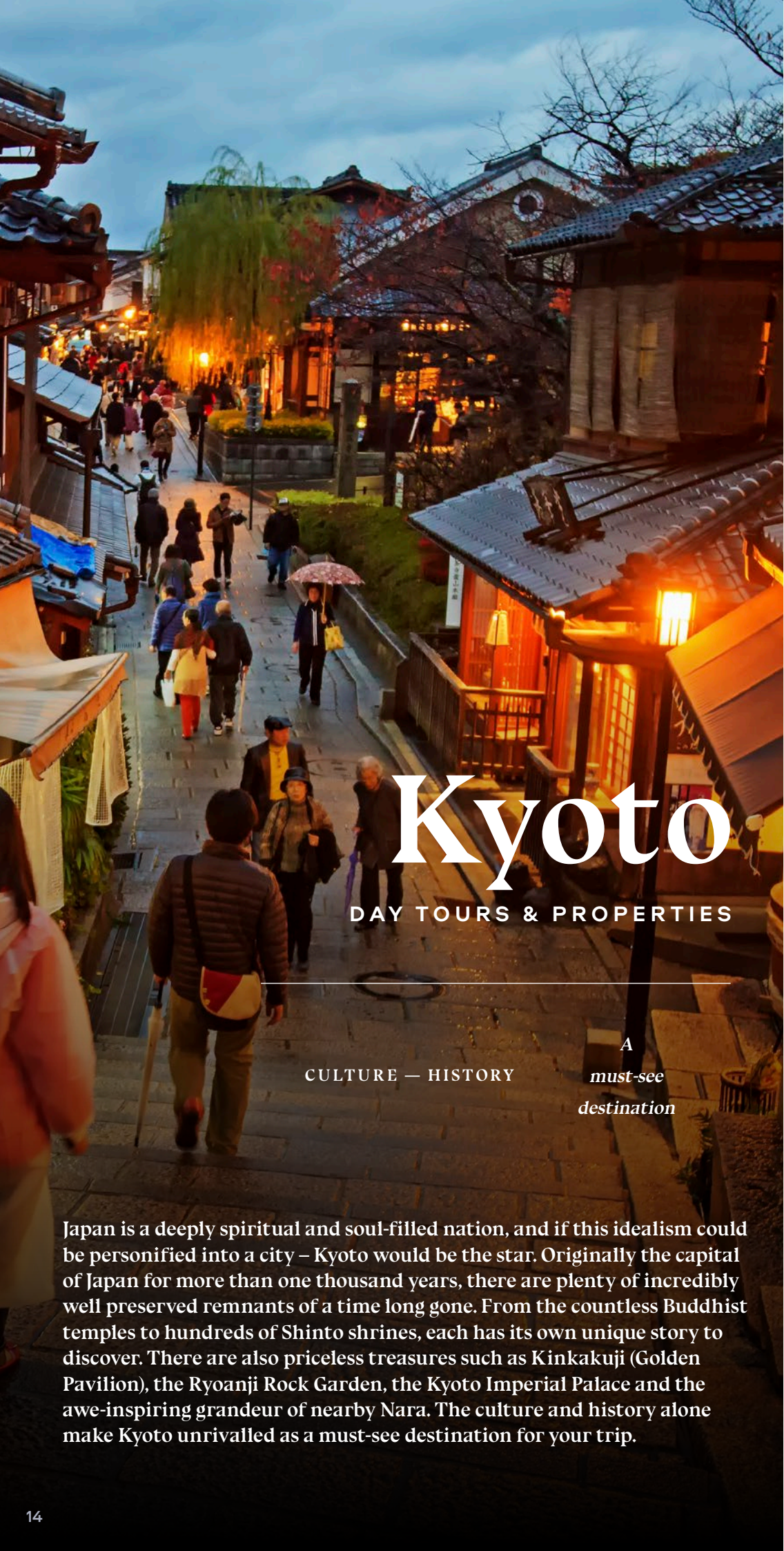
Sample a variety of local foods as you stroll around Yanaka Ginza and find yourself in a cosy house that serves Soba lunch, a food ingrained in Japanese culture!

DISCOVER TOKYO PRIVATE 8 HOUR WALKING TOUR

FROM \$491 per person (minimum 2 people)

Tell us your interests or let us know of anything you want to see or do in Tokyo, and we'll customise a tour with the help of our friendly local tour guide!





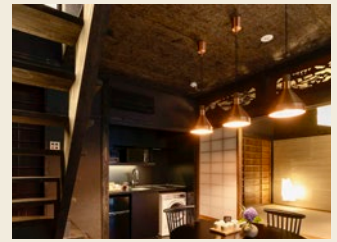
Kyoto

DAY TOURS & PROPERTIES

CULTURE — HISTORY

A
must-see
destination

Japan is a deeply spiritual and soul-filled nation, and if this idealism could be personified into a city – Kyoto would be the star. Originally the capital of Japan for more than one thousand years, there are plenty of incredibly well preserved remnants of a time long gone. From the countless Buddhist temples to hundreds of Shinto shrines, each has its own unique story to discover. There are also priceless treasures such as Kinkakuji (Golden Pavilion), the Ryoanji Rock Garden, the Kyoto Imperial Palace and the awe-inspiring grandeur of nearby Nara. The culture and history alone make Kyoto unrivalled as a must-see destination for your trip.



SUMIHOTARU OBORO

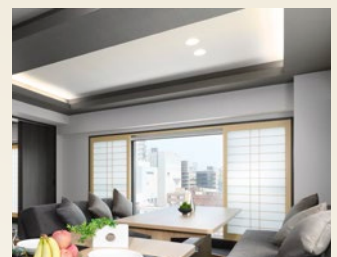
FROM \$472 per 4 Person House per night

Machiya are traditional wooden townhouses that date back to the 7th century. These luxurious townhouses give you a glimpse into ancient Japan, styled as a traditional ryokan yet providing all the amenities that you expect from modern day accommodation.

These private townhouses are perfect for everyone, from couples looking for an intimate getaway to large families who are looking for a little bit more room. Each Machiya can accommodate anywhere from 2 to 10 guests and come fitted with a fully equipped kitchen, washing machine, free Wifi, bathroom amenities and much, much more.

At the Machiya Residence Inn townhouses you can truly discover the meaning of privacy and live like a local.

◆◆◆◆ 4 STAR



MIMARU KYOTO STATION

FROM \$512 per quad room per night

Located only 3 minutes on foot from both Kyoto Station, this centrally located chain of apartment hotels are affordable and provide a great experience for families. Not only that, but they have exclusive Pokemon themed rooms, an unmissable adventure for lovers of anime!

◆◆◆◆ 4 STAR



JAPANESE EXPERIENCES WITH MAIKOYA – TRADITIONAL TEA CEREMONY WITH KIMONO FITTING

FROM \$81 per person (age 7+ only)

Be expertly fitted in a kimono and experience a Japanese tea ceremony in a traditional tea house!



KYOTO SAKE BREWERY AND TASTING TOUR IN FUSHIMI

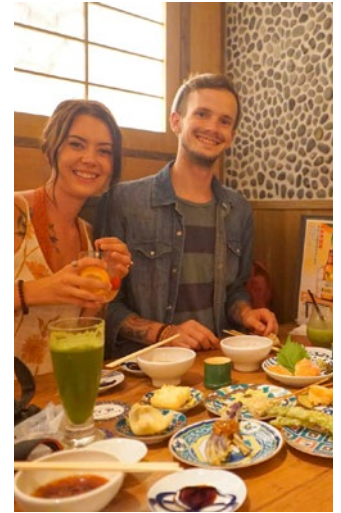
FROM \$146 per person

Take a stroll around Fushimi district, Kyoto's major sake brewery district, and visit the Kyoto Sake Museum. After visiting the sake brewery, enjoy tasting 18 kinds of Kyoto's local sake! Be a little tipsy, stop by one of Kyoto's shrines, and get refreshed by drinking exquisite Japanese groundwater at the end of the tour!

KYOTO NIGHT FOODIE TOUR

FROM \$249 per person

Try Kyoto's traditional, seasoned dishes at a hidden restaurant in Gion. Enjoy many kinds of Kyoto sake with your guide's explanation. Finish the tour with Kyoto's local dessert or even more foods!



JAPANESE EXPERIENCES WITH MAIKOYA – NINJA EXPERIENCE (FAMILY AND KID FRIENDLY)

FROM \$64 per person

Learn the secrets of ninja, get kitted out in full ninja garb, and tour the Samurai and Ninja Museum in Kyoto!



KYOTO ARASHIYAMA BAMBOO FOREST AND GARDEN HALF DAY WALKING TOUR

FROM \$198 per person

Immerse yourself in solitude in the mesmerising nature of Arashiyama. Visit the world famous, must-visit bamboo forest and Tenryu-ji, a UNESCO world heritage site, and immerse yourself in its rich history. Have a local Kyoto lunch and visit UNESCO world heritage temples Tenryu-ji!

NARA AFTERNOON TOUR

FROM \$119 per person

Take the time to explore Japan's first capital, Nara. Founded in the 8th century, Nara has some of the oldest and most exciting sights in the Kansai region, including the world's largest wooden structure, Todai-ji. You will also have the chance to get up close and personal with the deer at Nara Deer Park and check out Kasuga Shrine.

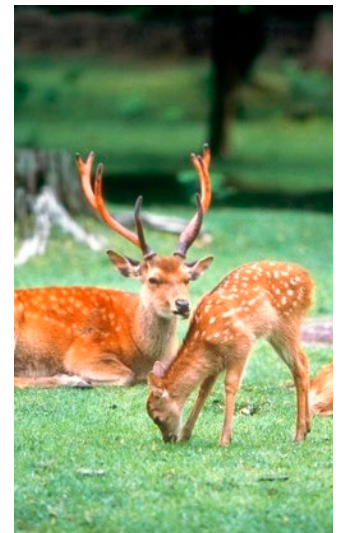


Photo courtesy of Nara Visitors Bureau



5 HOUR PRIVATE KYOTO WALKING TOUR

FROM \$393 per group (up to 5 participants)

Let our local friendly tour guide take you around Kyoto's hidden spots, and walk away feeling as you've made a friend in Japan!



VISIT

Mt. Fuji

AND HOT SPRINGS

TOURS

EXPLORE HAKONE NATIONAL PARK & HOT SPRINGS

TICKETS

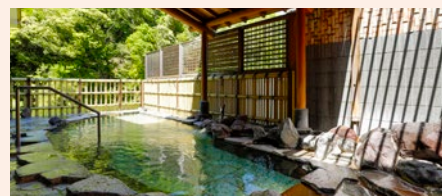
3 DAY Hakone Free Pass

Adult FROM \$83 per person

If you're coming from Tokyo and decide to spend a couple of nights in Hakone, make sure you pick up one of these passes, offering 3 consecutive days of transportation in the Hakone region, starting with a journey from Shinjuku Station in Tokyo to Hakone. Within Hakone, virtually every form of public transportation including local trains, buses, cablecars, ropeways and cruise rides are covered on this single ticket.

ACCOMODATION

HAKONE



HAKONE PAX YOSHINO

FROM \$236 per person twin share, including dinner & breakfast

Most rooms at this property have low lying beds, to cater for those who are keen on the traditional experience, but don't quite want to sleep right down low on futons. Enjoy this traditional hot spring resort, complete with Japanese banquet dining!

◆◆◆ 3 STAR



HOTEL INDIGO HAKONE GORA

FROM \$352 per person twin share, including breakfast

For those wanting less of a traditional experience, and more of a luxury hot spring resort experience, look no further than Indigo Hakone Gora. Unlike the majority of hot spring resorts in Japan, this particular modern hot spring resort permits use of swimwear in the thermal hot springs on site.

◆◆◆◆ 4.5 STAR

TOURS

MT. FUJI AND HAKONE 1 DAY TOUR RETURN BY BULLET TRAIN

Adult FROM \$267 per person

Child (6-11yrs) FROM \$162 per person

Enjoy the experience of visiting one of Japan's most famous landmarks, Mt. Fuji. Your adventure will start at Mt. Fuji's 5th Station where you can bask in the amazing views of the surrounding area (weather permitting), after which you will cruise your way along Lake Ashi to a traditional Japanese garden, Hakone-en. On route back to Tokyo you will board the Komagatake ropeway for your final Mt. Fuji picture perfect moment before jumping on the Shinkansen Bullet Train.

FUJI-Q HIGHLAND UNLIMITED RIDES TICKET, WITH RETURN TRANSFERS FROM TOKYO

FROM \$133 per person

Not only for those seeking the wildest rides Japan has to offer in this incredible theme park just on the outskirts of Tokyo, but for those looking to visit some of the most perfect vantage points of Mt. Fuji, look no further! We have proudly partnered up with Fuji-Q Highland to offer a convenient round trip journey from Tokyo city, and offer unlimited rides at Fuji-Q!



ACCOMMODATION

LAKE KAWAGUCHI

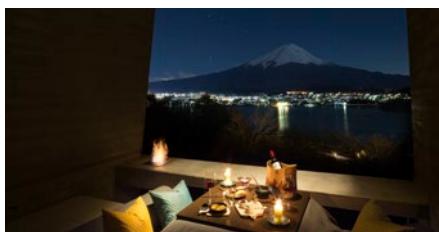


KASUITEI OOYA

FROM \$249 per person twin share, including dinner and breakfast

A lower cost option located at the south side of Lake Kawaguchi, this traditional ryokan offers rooms either facing Mt. Fuji or Lake Kawaguchi. Be treated to the full traditional experience of Japanese banquet dining, futon bedding and world class service, while you enjoy the natural hot springs on site!

◆◆◆ 3 STAR



HOSHINOYA FUJI

BASED on a minimum of 2 nights, from \$1,642 per person twin share, including dinner and breakfast

This luxurious, glamping option located on the outskirts of Fuji is the absolute best Japan has to offer. Extremely popular and often sold out, Hoshinoya Fuji is one entirely unforgettable experience.

◆◆◆◆◆ 5 STAR



Osaka

Osaka is a youthful, modern and culturally inspired destination in western Japan which has garnered the attention of the world. One of the most famous spots in Osaka is the Namba Minami area, namely for its incredible assortment of delicious, heart warming food and entertainment. Wander the long streets and be swept up in street performances, small food stores, standing bars and okonomiyaki restaurants. Osaka is truly one of Japan's most vibrant international cities.

TOURS AND TICKETS



KUROMON MARKET WALKING STREET FOOD TOUR IN OSAKA

FROM \$65 per person

Try Osaka's "must-eat" street food, Takoyaki at Kuromon Market. Have a taste of local favourite foods while walking through Kuromon Market and Dotonbori street. Find unique Japanese kitchenware and tableware souvenirs to bring home!



CYCLE OSAKA – THE BEST OF OSAKA 5-6 HOURS TOUR

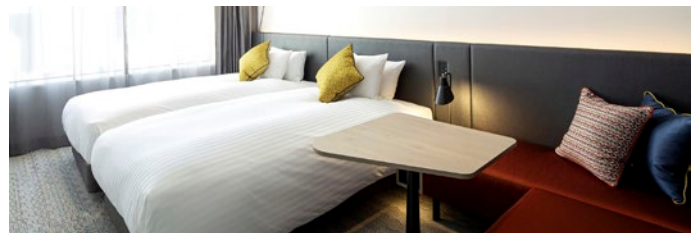
FROM \$197 per person

Our full day Osaka cycle tour is designed for those with less time and more energy!

After our first stop at the Japan Mint, we will cruise past the European style buildings and gardens of Nakanoshima before turning south and heading to one of our favourite local eateries for a quick lunch. After that, we will check out Japan's oldest temple and Japan's tallest building before entering the legendary Shin-Sekai neighbourhood (for more food?) and then the star of the show (Osaka Castle!) before returning to base.

ACCOMMODATION

OSAKA



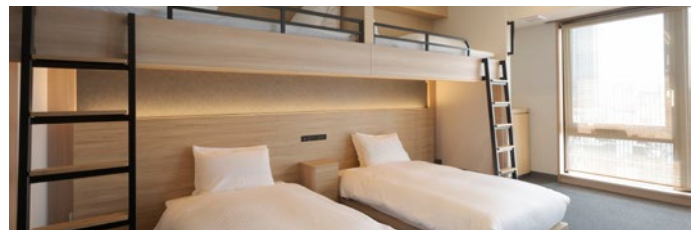
HOTEL INTERGATE OSAKA UMEDA

FROM \$136 per person twin share, room only

Located near Osaka Station, this 4-star option gives you a sense of openness that feels like the room and the city of Osaka are connected as one.

A variety of room types are available depending on trip purpose. Guests can enjoy graphic artwork from ancient to modern times painted on the walls, and streaming content of Osaka Original Kamigata Rakugo (comic storytelling).

◆◆◆◆ 4 STAR



MIMARU OSAKA NAMBA STATION

FROM \$404 per studio apartment, quad share

Situated in the heart of Osaka's shopping and dining district, this family friendly apartment hotel is the perfect place to stay and relax at the end of your trip; any stomach room you've been conserving all trip long, time to throw it out the window and get on board Osaka's Eat-Til-You-Drop dining culture.

◆◆◆◆ 4 STAR

HIROSHIMA

Hiroshima is an unmissable destination, as Japan's representative for the message of peace, and a city with remarkable heart, boasting some of Japan's most scenic spots.

TOURS



HIROSHIMA AND MIYAJIMA TOUR

Adult FROM \$241 per person,
Child (4-11yrs) FROM \$217
per person

Miyajima Island is home to one of Japan's most beautiful sights, Itsukushima Shrine. During high tide it appears to be floating, making for a magical photo opportunity. After you have enjoyed your time on Miyajima Island, you will walk through the Hiroshima Peace Memorial Park, dedicated to promoting peace around the world.



HIROSHIMA PEACE (HEIWA) WALKING TOUR AT WORLD HERITAGE SITES

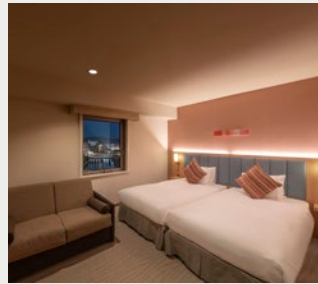
FROM \$139 per person

Get insights into the history of Hiroshima.

Past to present, your local guide will show you how life was like after the atomic bomb impact compared to Hiroshima today.

Experience a breathtaking view of Hiroshima as you indulge in lunch, allowing you to reflect on the city's rich history and vibrant present!

ACCOMMODATION



THE ROYAL PARK HOTEL HIROSHIMA RIVERSIDE

FROM \$76 per person twin share, room only

This exceedingly affordable, clean and comfortable hotel is located merely 8mins on foot from Hiroshima Station, perfect as a base to explore the city.

◆◆◆ 3 STAR



SHERATON GRAND HIROSHIMA

FROM \$159 per person twin share, room only

Conveniently located across from JR Hiroshima station, you are in prime position to access sights such as the A-Bomb Dome, Peace Park and Miyajima. Guestrooms come with complimentary Wifi.

◆◆◆◆ 4.5 STAR

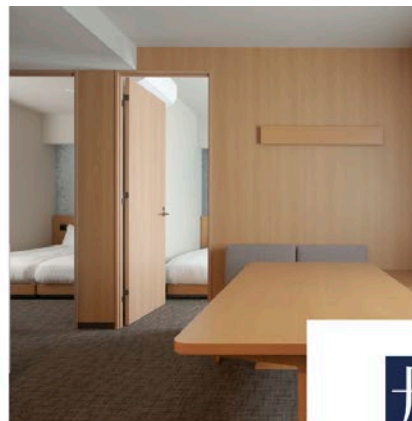
Spacious Apartments in Japan!

Mostly over 40 square meters

Kitchenette & Dining Space

27 hotels
in Tokyo, Kyoto and Osaka

<http://mimaruhotels.com/en/>



APARTMENT HOTEL
MIMARU





TAKAYAMA

Located in central Japan, Takayama is an old castle town surrounded by the towering Japanese Alps. Take a step back in time and explore the antiquity of this charming country town and feel the ancient soul of Japan. There are many attractions in Takayama with the most prominent being the UNESCO World Heritage Listed site Shirakawa-go!

TOURS

PRIVATE TAKAYAMA HALF DAY WALKING TOUR

FROM \$195 per person (Minimum 2 people)

Discover Japan's most beautiful alpine town. A half day guided tour of Takayama will allow you to explore this picturesque mountain town. Your private guide will collect you from your hotel (or agreed location) and take you on an interactive tour of Takayama's most unique sites. This tour is fully adaptable to your needs.

ACCOMMODATION



HONJIN HIRANOYA BEKKAN RYOKAN

FROM \$300 per person twin share, including dinner and breakfast

The historic area of Takayama is convenient 1 minute walk from your door, perfect for sightseeing! This traditional Japanese inn prides itself on impeccable service, exquisite food and friendly staff.

◆◆◆◆ 3.5 STAR



KANAZAWA

Often referred to as 'Little Kyoto', Kanazawa is a city on the western seaboard of Japan that boasts many historical attractions such as restored samurai residences, modern museums and markets. Kanazawa's main attraction is Kenrokuen gardens, dedicated as one of Japan's three best landscape gardens.

TOURS

PRIVATE KANAZAWA FULL DAY WALKING TOUR

FROM \$289 per person (Minimum 2 people)

Discover Japan's most creative city on our spectacular Kanazawa full day tour. Our award winning private guide will collect you from your hotel lobby (or other suitable place) and guide you through this UNESCO city of Arts and Culture together on your custom tour. Visit the beautiful Geisha Districts, the Samurai enclaves, Kenrokuen Gardens, Kanazawa Castle and Omicho fish market to name just a few highlights.

ACCOMMODATION



DAIWA ROYNET HOTEL KANAZAWA MIYABI

FROM \$126 per person twin share, room only

Beginning with interior designs that incorporate Kanazawa's traditional culture, this hotel has prepared rooms where you can be comfortable, offering free Wifi (wireless LAN) service in all rooms, Imabari towel amenities and so on.

◆◆◆◆ 3.5 STAR

YUDANAKA ONSEN

In a single location in the mountains of Nagano, you can see snow monkeys, experience a traditional ryokan, and bathe in natural mineral hot springs.

TOURS

1 DAY SNOW MONKEY, ZENKOJI TEMPLE AND SAKE TASTING – FROM NAGANO STATION

FROM \$221 per person

Take in some of the highlights of Nagano on this engaging tour starting with a visit to Zenko-ji – one of the oldest and most important Buddhist temples in Japan – followed by sake tasting and lunch at a nearby restaurant. It's then time to head to the Snow Monkey Park and its world-famous hot spring-bathing monkeys! Led by a locally-based English-speaking guide, this tour is a great way to see the best that Nagano has to offer.

ACCOMMODATION



BIYU NO YADO – RYOKAN

FROM \$238 per person twin share, including dinner and breakfast

With free pick up from Yudanaka Station, privately rentable roof top hot spring bath, as well as free transfers to the Snow Monkey Park, this property is an excellent option for you to see the wild snow monkeys in an onsen and enjoy a traditional Japanese stay!

◆◆◆◆ 4 STAR



MACHIYA INNS & HOTELS

Make Your Stay a Memorable Experience

KYOTO | KANAZAWA | TAKAYAMA

MACHIYA RESIDENCE INN®

Traditional Japanese-style
Private Holiday House Rentals



THE MACHIYA HOTELS®

Japanese-style Boutique
Machiya Hotels

www.machiya-inn-japan.com





2ND TRIP
INSPIRATION

EXPLORE

Hokkaido

WITH THE JR HOKKAIDO 7-DAY PASS

FROM \$1,202 per person twin share

Furano Flowerfields

Japan's north island is home to world-class skiing and incredibly beautiful natural vistas. Hokkaido is the perfect destination for those who love the outdoors, with unspoiled nature and picturesque rural landscapes for hikers in the warmer months, and arguably the best snow in the world for skiers and snowboarders in the colder months.

HIGHLIGHTS INCLUDE:

AN OVERNIGHT STAY IN NOBORIBETSU ONSEN

EXPLORING HOKKAIDO'S HIDDEN WILDERNESS AND BEAUTIFUL NATURE

LEARN ABOUT THE STORIED HISTORY OF HOKKAIDO

EXPLORE THE COLOURFUL BIEI AND FURANO FLOWER FIELDS (SUMMER ONLY)

INCLUSIONS

ACCOMMODATION

BREAKFAST/DINNER (IN SOME LOCATIONS)

7-DAY HOKKAIDO JR PASS

DAY 1: HAKODATE

After arriving at New Chitose Airport, exchange your JR Hokkaido 7-Day Pass and take the train to the port town of Hakodate via the coast. Hakodate played an important role in the re-opening of Japan after 200-years of isolation and is filled with many beautiful buildings from this era. Explore Goryokaku, the star shaped fort famous for its moat and Sakura trees in the spring. Take the ropeway up Mount Hakodate to take in one of Japan's top night views over the city and Hakodate Harbour.

DAY 2: HAKODATE

Start the day by trying some of Hokkaido's famous seafood at the Hakodate Morning Seafood Market. Take a short train ride to Onuma Quasi National Park and explore the stunning natural beauty that Hokkaido has to offer. End the day back in Hakodate and visit the Hakodate Brick Warehouse District and Motomachi, home to many historic foreign residences from the 1800's.

DAY 3: NOBORIBETSU (D)

Travel to Noboribetsu, one of Hokkaido's most popular traditional onsen resort towns via train and a short local bus ride. The highlight of Noboribetsu is Hell Valley (Jigokudani) where you can see sulphur rich pools and volcanic activity. Noboribetsu also has many pleasant walking trails and natural foot baths. Spend the night in one of the townships many ryokans and experience some of Japan's finest onsens with a traditional kaiseki dinner.

DAY 4: FURANO (B)

Travel by train into the heart of Hokkaido, through the picturesque rural landscape to Furano. Try some of Hokkaido's delicious dairy products at Furano Cheese Factory or treat your palate at Furano Winery. End the day by strolling around the Ningle Terrace and Forest Boardwalk with its many illuminated craft shops.

DAY 5: FURANO (B)

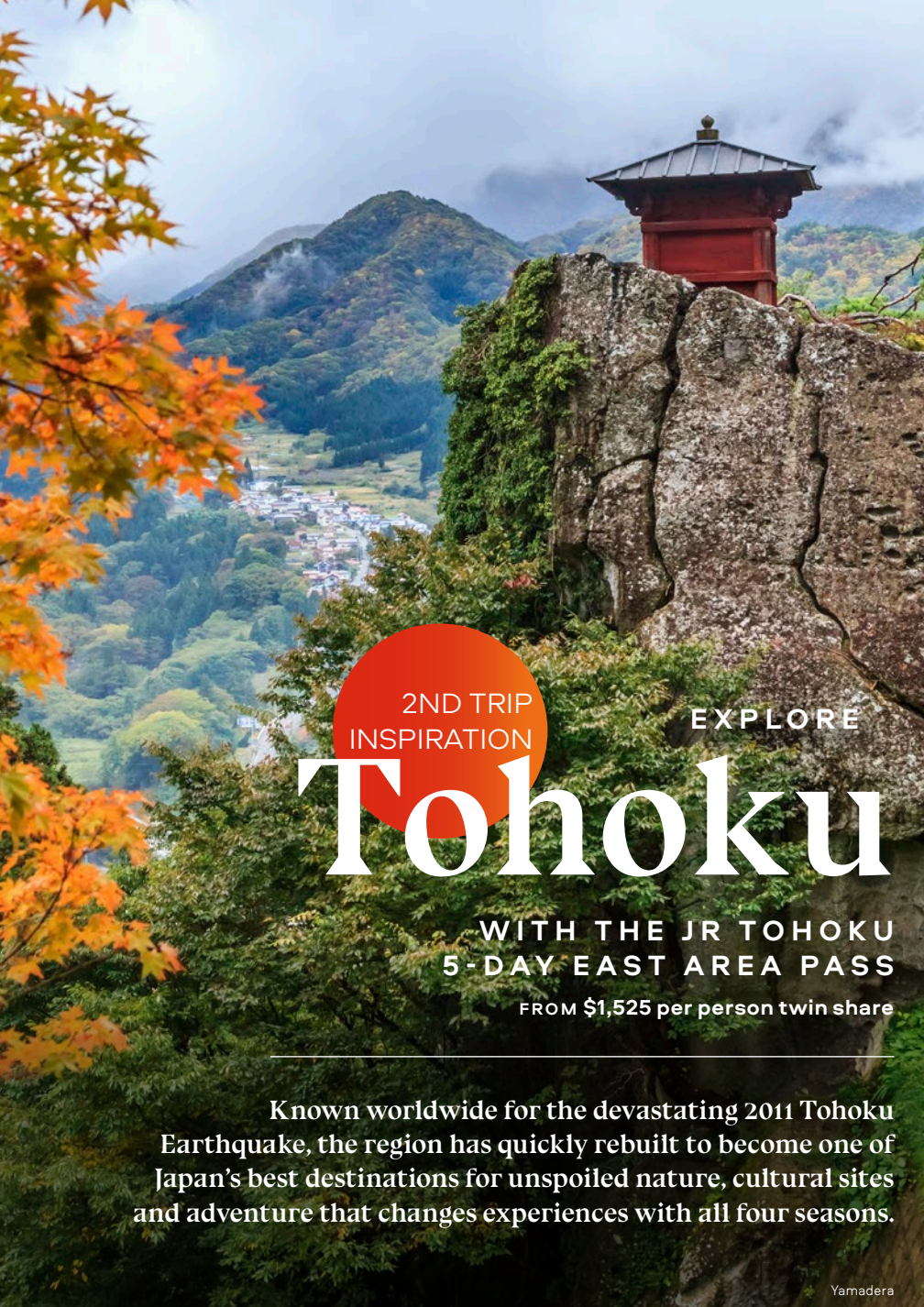
Depending on the season, Furano has many unique sights worth visiting! In winter, hit the slopes and experience some of Japan's finest Ja-powder in the Furano Ski Fields. In spring and summer, Furano is home to an amazing floral display where the rolling hills are covered in rainbow of flowers. In autumn, head to the Mount Asahidake, Hokkaido's tallest peak, to see the autumn colours before they reach anywhere else in the country.

DAY 6: SAPPORO (B)

Hop on the train to Asahikawa for a bowl of the famous Asahikawa Ramen, before continuing onto Hokkaido's capital Sapporo. In Sapporo, head to the Ainu Historical Village to uncover the history of Hokkaido's native peoples before visiting the Sapporo Brewery for dinner, be sure to try the Japanese BBQ dish Ghengis Khan!

DAY 7: SAPPORO

End your trip with a short day trip by train to Otaru, a quaint harbour town with a beautiful canal. Be sure to stop into one of Otaru's many museums before heading back to Sapporo. Have one final bowl of delicious Hokkaido Ramen in Sapporo's ramen alley and walk off the calories at Odori Park, a central park cutting through downtown Sapporo. For those with extra time, head up to Mount Moiwa for another stunning night view of Sapporo and its surroundings.



2ND TRIP
INSPIRATION

EXPLORE

Tohoku

WITH THE JR TOHOKU
5-DAY EAST AREA PASS

FROM \$1,525 per person twin share

Known worldwide for the devastating 2011 Tohoku Earthquake, the region has quickly rebuilt to become one of Japan's best destinations for unspoiled nature, cultural sites and adventure that changes experiences with all four seasons.

Yamadera

DAY 3: SENDAI

Stop by the Sendai morning market to taste some delicious local cuisine before heading out of the city for a day trip. Matsushima Bay is heralded as one of Japan's most beautiful landscapes thanks to its pine tree covered islands that protected the region from the 2011 Tohoku Earthquake and Tsunami. Alternatively, Yamadera mountainside temple offers incredible views of the neighbouring valley, perfect for a rural escape.

DAY 4: AIZUWAKAMATSU (D,B)

Hop on the train to Aizuwakamatsu, a small city nestled in a valley with a storied history. Commonly referred to as Aizu, the city has many historical sites including Tsuruga Castle, Aizu Bukeyashiki – a reconstructed samurai mansion and Iimoriyama where Sazaedo Pagoda stands, unique for its spiralling staircase. End the day by staying in ryokan at Higashiyama Onsen, just outside of downtown.

DAY 5: NIKKO

Take a side trip to Ouchijuku, a former postal town with beautiful straw thatched roof houses in a quaint valley. Be sure to try some soba noodles served in the small restaurants here, eaten with a stick of leek instead of utensils. In the afternoon consider a side trip to the small town of Kitakata, Japan's ramen capital – with more ramen stores per capita than anywhere else in the country. Catch an evening train to Nikko so that you can make an early start to avoid the crowds.

DAY 6: NIKKO (B)

Home to multiple UNESCO World Heritage sights including Toshogu Shrine, Nikko is a must see in any trip north of Tokyo. Spend the day roaming central Nikko and consider a stroll through the gorge at Kanmangafuchi Abyss or a side trip to Edo Wonderland, a recreation of ancient Tokyo.

DAY 7: RETURN TO TOKYO (B)

Take the bus from Central Nikko up to Okunikko, home to Lake Chuzenji and Kegon Falls – best seen during autumn for the incredible autumn colours the area is renowned for. Hikers can enjoy one of the many hiking trails in the region or for those looking for an easier way to take in the beautiful vistas, consider visiting the Akechidaira Plateau ropeway.

End your journey by catching a train back to central Tokyo.

HIGHLIGHTS INCLUDE:

STAYING IN A SAMURAI TOWN IN THE MOUNTAINS

WORLD HERITAGE SHRINES IN NIKKO

UNSPOILED NATURE OFF THE BEATEN PATH

INCLUSIONS

BREAKFAST/DINNER (IN SOME LOCATIONS)

5-DAY TOHOKU JR EAST AREA PASS

TRAIN TICKET FROM NIKKO TO TOKYO

DAY 1: KAKUNODATE (D)

Start your journey from Tokyo Station and exchange your JR East 5-Day East Area Pass before boarding the Akita Shinkansen to the small rural town of Kakunodate hidden in northern Tohoku. Kakunodate is a former castle town famous for its well-kept Samurai House district, with some of the best cherry blossoms nationwide in the spring. Stay a night in a traditional ryokan here to soak up the ancient atmosphere the town holds.

DAY 2: SENDAI (B)

Catch a bullet train to Tohoku's largest city Sendai, and explore the major sights of the city including Aoba Castle Ruins for a fantastic view of the city. Nearby Zuihoden Mausoleum is surrounded by giant cedar trees to symbolise the long history of the former ruling clan that is enshrined here.

2ND TRIP
INSPIRATION

EXPLORE

Western Japan

WITH THE JR WEST 7-DAY
SANYO SANIN AREA PASS
FROM \$779 per person twin share

Kurashiki Bikan Historical Quarters

Chugoku

Often skipped over by travellers, the Chugoku Region is home to some of Japan's best historical, cultural and natural sites. Chugoku is an easily traversed region of Japan that features unexplored natural beauty, multiple UNESCO Heritage sights and lively cities with something for every traveller.

HIGHLIGHTS INCLUDE:

WANDER THROUGH SOME OF JAPAN'S
FINEST LANDSCAPE GARDENS

HIROSHIMA PEACE PARK AND
MIYAJIMA ISLAND

EXPLORE OFF-THE-BEATEN PATH
ON THE SEA OF JAPAN COAST

UNESCO WORLD HERITAGE SITE
HIMEJI CASTLE

INCLUSIONS

ACCOMMODATION

BREAKFAST/DINNER (IN SOME
LOCATIONS)

JR WEST 7-DAY SANYO SANIN
AREA PASS

DAY 1: HIMEJI

Begin your journey from Kyoto or Osaka, and exchange your JR West 7-Day Sanyo Sanin Area Pass before boarding a train for Himeji. Explore the UNESCO Heritage Himeji Castle, arguably Japan's finest and the nearby Kokoen Garden at the base of the castle.

DAY 2: OKAYAMA

Travel by bullet train to Okayama, home to Korakuen Traditional Japanese Landscape Garden – rated Top 3 in Japan. Head up to Okayama Castle (also known as Crow Castle for its black exterior) for a great view of the garden and Okayama city over the river. In the evening, head by train to Kurashiki, known as the Venice of Japan thanks to its picturesque canals and restored storehouse district

DAY 3: OKAYAMA

Okayama is a perfect base for many day trips to the region depending on your interests. Visit the world-renowned Naoshima Art Island, home to Benesse House Art Museum or the Art House Project. Hire a bike and cycle the Kibi Plain, a charming cycling route through rural Okayama stopping by many temples and shrines. Or head into the mountains and visit the secluded Bitchu-Takahashi castle town with its beautifully restored old town and crisp mountain air.

DAY 4: MATSUE

Catch a morning train through the hinterland of Chugoku to Matsue on the Sea of Japan Coast, a quaint lakeside city often skipped over by travellers. Be sure to visit nearby Izumo Shrine,

one of Japan's oldest and most sacred shrines before catching the sunset over Lake Shinji.

DAY 5: HIROSHIMA

Start your morning early and head to the spectacular Adachi Museum of Art, an art museum surrounded by a serene landscape garden often heralded as Japan's best. Continue via train to Hiroshima in time for dinner, and explore Hiroshima's bustling downtown stopping in at Okonomimura – a collection of restaurants specialising in Hiroshima's famous Okonomiyaki dish (Japanese Pancake).

DAY 6: HIROSHIMA

Known worldwide for the unfortunate events on August 6th 1945, Hiroshima and its Peace Memorial Park and Museum are unmissable for any journey to the city. After paying your respects, head to Miyajima – an island 45mins out of the city. Miyajima is home to UNESCO Heritage Itsukushima Shrine, known for its floating torii gate and local friendly deer which roam the island.

DAY 7: RETURN TO OSAKA VIA KOBE

It is time to head back towards Kyoto or Osaka, but first stop over in the port city of Kobe to try the world-famous Kobe Beef at a Teppanyaki restaurant. Kobe is also home to a large Chinatown district – the city is one of Japan's best culinary destinations! Consider exploring the historic districts of Kitano, at the foot of Mount Rokko where foreign merchants settled in the 19th century, before catching a train back to Kyoto or Osaka to end your trip.



Sada Chinkabashi Bridge

EXPLORE

Shikoku

WITH THE JR SHIKOKU 7-DAY ALL SHIKOKU RAIL PASS

FROM \$1,725 per person twin share

Shikoku

Frequently overlooked by travellers despite its proximity to major tourist destinations, Shikoku is home to incredibly beautiful rural landscapes, ancient pilgrimage sites, world renowned onsen and an escape from the crowds.

HIGHLIGHTS INCLUDE:

DISCOVER THE NATURAL BEAUTY AND CULTURE OF JAPAN'S LEAST EXPLORED REGION

VISIT SITES ALONGSIDE PILGRIMS FROM THE 88 TEMPLE PILGRIMAGE

BATHE AT DOGO ONSEN, THE BATHHOUSE THAT INSPIRED THE GIBLI MOVIE 'SPIRITED AWAY'

INCLUSIONS

ACCOMMODATION

BREAKFAST/DINNER (IN SOME LOCATIONS)

JR SHIKOKU 7-DAY ALL SHIKOKU RAIL PASS

SECTOR TRAIN TICKETS/FERRY TO AND FROM SHIKOKU

DAY 1: TAKAMATSU

Begin your journey from Kyoto or Osaka, and take a train to Shikoku's northernmost city Takamatsu. Takamatsu is home to Ritsurin, one of Japan's best landscape gardens – a must see when visiting Takamatsu. Afterwards visit Shikokumura, an open-air museum exhibiting traditional buildings from the island before heading up to Yashima Shrine for a panoramic view of the city and Seto Inland Sea.

DAY 2: TOKUSHIMA

Today is the day to commence your JR Shikoku Pass, so start your morning with a side trip to Kotohira Mountain Temple or Shodoshima Island for a slice of the Mediterranean in Japan – an island filled with olive groves. Before leaving Takamatsu, be sure to grab a bowl of the famous Sanuki udon noodles. Next catch a train to nearby Tokushima City and stop by the Awa Odori Museum, a museum dedicated to the popular summer festival, on most days visitors can catch a performance of the traditional dances performed at the festival here at the museum.

DAY 3: TOKUSHIMA

Shikoku is known nationwide for its 88-Temple Pilgrimage, so be sure to visit one of the many temples in Tokushima – Ryozenji Temple No.1 and Gokurakuji Temple No.2 are the first stop for most pilgrims completing the multi-week walk. After visiting the temples, continue to Naruto and see the natural wonder of the Naruto Whirlpools. Visitors can even take a boat ride over these whirlpools to see them up close.

DAY 4: IYA VALLEY (D)

Head into the unexplored wilderness of the Iya Valley, deep in the mountains of Shikoku. Hike to one of the Iya Valley's many vine-rope bridges, take a boat ride

down the Monobe River and unwind and enjoy the serenity off the tourist trail at a ryokan with your own onsen overlooking the river and forest.

DAY 5: KOCHI (B)

Travel by express train to the seaside city of Kochi, before catching a bus to Mount Godaisan, a mountain with the charming Chikurinji Temple No.31 and Makino Botanical Garden to learn about the native flora of Shikoku with great views of the city. Continue onwards to Katsurahama Beach, a scenic beach abundant with Japanese pine-trees perfect for an afternoon stroll. Try some Katsuo-no-tataki (sliced skipjack tuna), Kochi's most famous dish at a nearby restaurant.

DAY 6: KOCHI

Start your day early and head to the Kochi Morning Market (Sundays only) for fresh produce and dishes from local farmers and vendors. Kochi provides a great base for day trips to southern Shikoku including the Monet Garden, inspired by the gardens painted by the famous French painter, or head westwards to the freshwater Niyodo River where you can ride bikes over the submersible bridges that cross the river or try your hand at making your own traditional Washi paper. Return to Kochi City for sunset at Kochi Castle and dine at Hirome Market Hall, a hawker-like food hall with various local cuisines.

DAY 7: MATSUYAMA

Catch a morning train to Matsuyama, famous for its beautiful onsen Dogo Onsen, which was an inspiration for Studio Ghibli movie 'Spirited Away'. Be sure to catch the chairlift up to the top of Matsuyama Castle, located in the centre of the city for a fantastic view or stop by one of Matsuyama's many art museums.

DAY 8: MATSUYAMA

Take a short day trip by train to the small town of Iyo-Ozu and visit the beautiful riverside villa Garyu Sanso. The preserved old town connects Garyu Sanso with the nearby Ozu Castle perched above the river. When returning to Matsuyama, consider stopping by Shimonada Station – another inspiration for 'Spirited Away' overlooking the ocean.

DAY 9: RETURN TO OSAKA/ HIROSHIMA

Unfortunately it's time to leave Shikoku, take a train to Kyoto or Osaka or consider taking a short ferry ride to Hiroshima to continue your journey.

EXPLORE

Kyushu

WITH THE JR KYUSHU
7-DAY ALL AREA PASS

FROM \$1,357 per person twin share

Fast becoming the next frontier for travellers to Japan, Kyushu offers accessible vibrant cities, extraordinary volcanic sites, delicious food and a connection to the rest of Asia unlike anywhere else in Japan.

Mt. Aso

Kyushu

HIGHLIGHTS INCLUDE:

NAGASAKI PEACE PARK AND
MEMORIAL MUSEUM

EAT SOME OF KYUSHU'S INCREDIBLE
REGIONAL DISHES INCLUDING
TONKOTSU RAMEN AND SATSUMA
CUISINE

VISIT THE ACTIVE VOLCANOES OF
KYUSHU IN SAKURAJIMA AND MT. ASO

INCLUSIONS

ACCOMMODATION

BREAKFAST/DINNER (IN SOME
LOCATIONS)

JR KYUSHU 7-DAY ALL AREA PASS

DAY 1: FUKUOKA

Start your Kyushu journey in Fukuoka, Kyushu's largest city popular with travellers worldwide thanks to its sensational food scene. Consider visiting Dazaifu Temple complex just outside of the city, before returning to downtown for a bowl of Fukuoka's specialty – Hakata Tonkotsu Ramen (Pork broth ramen). The Fukuoka Yatai (outdoor dining stalls) along the river serve delicious local cuisine well into the night and are popular with locals and travellers every night.

DAY 2: NAGASAKI

Start your day by exchanging your JR Kyushu 7-Day All Area Pass and take the train to the port city of Nagasaki, known worldwide for the unfortunate events of August 9th 1945. A visit to Nagasaki Peace Park and Memorial Museum is a must for all travellers and stop by Nagasaki's bustling Chinatown district before heading up to Glover Garden, home to mansions of western merchants with scenic views of the valley Nagasaki sits within. For a higher view, consider visiting Mount Inasayama for one of Japan's best night views.

DAY 3: KAGOSHIMA

Nagasaki's history goes further than the 20th century as the city was a hub for trade in Japan throughout the centuries over 200-year isolation period from the rest of the world. Visit a reconstruction of Dejima, the only point of contact for Portugese and Dutch traders during this time before catching a bullet train to Kagoshima in southern Kyushu. Roam around Senganen Japanese landscape garden before heading to Shiroyama Park for a mountaintop view over the city and towards Sakurajima.

DAY 4: KAGOSHIMA

Kagoshima is nicknamed 'The Naples of Japan' for its neighbouring active volcano, Sakurajima. Consider a day trip onto the island, and explore its geothermal activity for yourself in one of the island's many natural hot spring baths. Alternatively, visit Ibusuki on the Satsuma Peninsula, a famous hot spring resort famous for sand bathing (buried under naturally heated sand at the beach).

DAY 5: KUMAMOTO

Begin your day early by catching the train to Kumamoto, a beautiful castle city in central Kyushu. Take your time to explore the beautiful Kumamoto Castle before heading to Suizenji Garden, which is especially beautiful in the spring time.

DAY 6: MOUNT ASO OR YUFUIN

Explore the natural beauty of Kyushu, by visiting either Mount Aso or Yufuin and stay in a nearby traditional ryokan. Mount Aso is an active volcano with a stunning caldera with views of the crater and nearby rolling hills that can be visited depending on volcanic activity. Alternatively, Yufuin is a small town growing in popularity for its quaint main street and peaceful surroundings. Consider hiring bikes in Yufuin to visit Lake Kinrinko or the many cafes and onsen within the township.

DAY 7: BEPPU

Head to Beppu, one of Japan's most famous hot spring resort towns which offers an incredible range of baths and experiences including mud baths, sand baths and more. Spend the afternoon relaxing at a traditional ryokan and delve into the world of onsen and zen.

DAY 8: FUKUOKA

Spend the morning exploring the Beppu Hells (Jigoku), seven pools of bubbling thermal activity too hot to swim in. Visit the Beppu Jigoku Museum before visiting the pools to best understand the wonder of Beppu and why all of Japan has fallen in love with onsen culture. Wrap up your journey of Kyushu by catching an express train back to Fukuoka.

SUGOI Japan

POP CULTURE

すごい

Photo by: teamLab. Floating in the Falling Universe of Flowers © teamLab

Super Sugoi!

Sugoi means “*amazing*” or “*unbelievable*”. Let Japan exceed your expectations and bring home the memories of a lifetime!

Japan is a unique destination, most unlike any country in the world. Geisha, samurai, temples, shrines and ramen are culturally unique experiences that immediately come to mind when dreaming about travelling to the land of the rising sun. Japan is also home to a plethora of weird and wonderful experiences such as maid cafes, capsule hotels and the famed Teamlab Digital Art Museums. The contrast of Japan’s ancient and modern has created an incredible travel experience that is not to be missed.

A few suggestions for your quirky bucket list include animal cafes, rabbit and cat islands and new-age hotels where robots check you in. You can dive into the electronic wonderland that is Akihabara, experience first-hand the Harajuku fashion district, marvel at Dotonbori’s neon lights, immerse yourself in art on Naoshima island and party in Kabukicho, Shinjuku’s entertainment district.



HARAJUKU KAWAII FASHION AND POP CULTURE TOUR

FROM \$122 per person

Get insights into Harajuku pop-culture and fashion from your guide! Explore the latest photo hotspot after strolling down Takeshita Street! Cook Okonomiyaki or Monja-yaki on your own in a place adorned with various Japanese local arts!

GHIBLI MUSEUM AND GHIBLI FILM APPRECIATION TOUR

FROM \$290 per person

This tour offers a guaranteed entry into the famed Tokyo Ghibli Museum, along with visits to curated spots around Tokyo city that have contributed inspiration to the works of Hayao Miyazaki!



TOKYO SUMO TOUR (B-GRADE ARENA SEATS) – JANUARY, MAY, AND SEPTEMBER TOURNAMENTS

FROM \$167 per person

Experience the atmosphere of Japan’s national sport, with guaranteed reserved seat tickets and a tour guide to explain everything there is to know about sumo!



SANRIO PUROLAND ADMISSION TICKETS

FROM \$38 per person

A short train commute away from the major train station of Shinjuku in Tokyo city, is a home dedicated to the numerous popular characters of Sanrio, the most famous being Hello Kitty. Almost single-handedly symbolic of Japanese pop culture, this theme park is a must-see for families and lovers of Hello Kitty and friends!

© 2024 SANRIO CO., LTD. APPROVAL No.P1607053

Universal Studios Japan

One of Japan's leading theme parks, highly praised by visitors to Japan! A super-exciting experience that will unleash your emotions is here! No. 1 in Tripadvisor Travellers' Choice Best of the Best in the Japanese theme park category for four consecutive years (2017-2020). A thrilling experience where you can become a character in a realistic game or animation world! Universal Studios is just 11 minutes by train from Osaka on the JR Yumesaki line!



OSAKA POP CULTURE – PRIVATE 5 HOUR WALKING TOUR

FROM \$393 per group (up to 5 guests)

While this is a totally customisable tour, our very personable tour guide recommends that you let her take you to make takoyaki, visit a Mameshiba (Miniature, or "Bean" Shiba) Café, and melt at a heads spa experience. Admission costs to be paid on the spot.

TEAMLAB PLANETS ADMISSION TICKETS

FROM \$67 per person

One of Tokyo city's most extraordinary and mind-blowing digital art exhibits, Teamlab has rapidly cemented itself as the #1 highlight of any trip to Tokyo. Creations and art in a style wholly original that must be seen to be believed.



A thrilling experience where you can become a character in a realistic game or anime world!



Limited Period



Limited Period

For the event period and other details, please visit our official website.

© Nintendo ©KoyoharuGotoge/ SHUEISHA, Aniplex, ufotable
©2024 Pokémon. ©1995-2024 Nintendo/Creatures Inc. /GAME FREAK inc.
TM & © Universal Studios. All rights reserved. CR23-3845J-B



UNIVERSAL STUDIOS JAPAN

ALL Entry 1 Day Pass

ADULT FROM \$131 per person

CHILD (4-11yrs) FROM \$83 per person

All Entry Pass includes admission to all areas except for Super Nintendo World. To enter Super Nintendo World, an area timed entry ticket: advance booking or an area timed entry ticket/standby entry ticket is required.

Please refer to <https://www.usj.co.jp/web/en/us/areas/super-nintendo-world> for more information.

Some of the express passes would include Super Nintendo World timed entry, so please enquire about this before purchase.



Conditions

Please read the booking conditions carefully as they incorporate the basis upon which bookings are accepted by JTB Australia Pty Ltd. ("JTB").

Brochure Validity

The brochure is valid from 01 July 2024 to 30 June 2025.

Changes in Prices and Itineraries

Prices in this brochure are based on tariffs and airfares current as of 01 July 2024. In this time of escalating prices and economic instability, it is impossible to predict accurately fluctuations in exchange rates or increases to the cost elements of tours. JTB does not have control of airfares, fuel, airport and airlines taxes and surcharges, hotel rates and other service provider's tariffs. In the event of such fluctuations or increases affecting the prices which JTB pay for transportation, hotel accommodation and other services, we reserve the right to adjust our prices as may be necessary at any time up to and including the day that final payment is made.

If we are forced to change your booking or part of your booking for any reason beyond our control, we reserve the right to vary your itinerary and will endeavour to give you notice thereof. In the event that any one change or series of changes to your itinerary demonstrates that your tour has thereby become materially different from the contemplated prior to the changes being effected and in respect of, we have accepted your deposit or full payment, you have the right to ask for a rearrangement or to withdraw from the tour and all monies will be refunded less any charges levied by suppliers.

It is essential you check with your booking agent whether any such changes have occurred in your tour before you complete your final payment. In the unlikely event that we have to cancel your tour because of events outside our control, we will, if we are able to, offer you an alternative tour of similar standard. If you do not accept this alternative tour, we will refund in full any monies already paid.

Deposit Payments

A non-refundable 20% deposit is payable up front to secure arrangements (30% for ski). The balance must reach JTB no later than 30 days prior to departure (90 days for ski). If for any reason the deposit or the final balance is not received by us on the due date, we reserve the right to treat your booking as cancelled and apply the appropriate cancellation charges. The deposit will be forfeited.

Cancellation

Should you or a member of your party cancel your booking or any part of your booking, you must advise your booking agent in writing. The letter must be signed by the person who made the original booking. Cancellations by phone will not be accepted. Cancellations are subject to a charge to cover estimated costs. The non refundable deposit may be kept for future travel for up to 12 months.

Land arrangements: After confirmation 10% plus any charges levied by hoteliers and/or land operators.

Air arrangements: Any time after full payment and prior to departure 10% plus any charges as required by the Airline Tariff Regulations. In certain circumstances cancellation fees may be subject to GST and will therefore be charged to you.

Amendments and Re-bookings Fees

After deposit has been received, amendment fees of \$60.00 per file per amendment shall apply. In addition airlines or our service providers may also charge a fee. Amendment fees apply to name changes only; any date changes, or any other changes of any kind that require cancellation and rebooking, will be treated as cancellations and cancellation fees as stipulated above, will be applicable.

Late Bookings

A late booking fee of \$55.00 per file will apply to package bookings requested within 7 days of departure.

Refunds

To the full extent permitted by law, no refund is available after the travel has commenced, in respect of any tours, accommodation, meals or any services not utilised.

Travel insurance

We strongly recommend that at the time of booking you purchase travel insurance.

Health and Immigration

Passengers should familiarise themselves with any health or visa requirements that may apply to the areas they intend visiting. Passengers shall be responsible for all entry, exit, health and other documents required by law, regulations, orders, demands or requirements of countries being visited or transited. Each passenger shall carry a valid passport at all times. Visas are the responsibility of the passenger and JTB is not liable for any loss or expense due to a passenger's failure to comply with the above.

Baggage

The free baggage allowance for the international travel varies with airlines. Excess baggage charges are the responsibility of the passenger.

Pre-departure Contact

It is essential to ensure that you advise your booking agent of a 24 hour contact number.

Travel and Accommodation

It is important to note that all bookings with JTB are subject to the terms and conditions and limitations of liability imposed by airlines, coach operators, hoteliers, and other service providers, including but not limited to shipping, rail, car hire and restaurants, whose services

we utilise. Some of which limit or exclude liability in respect to death, personal injury, delay and loss or damage to baggage and JTB's liability is excluded or limited accordingly.

Not included in the Tour Price

Interstate and intrastate passengers are responsible for the cost of their own travel arrangements from their hometown to and from their choice of the international departure city. The price of any accommodation in Australia, passport, and visa costs where applicable, are not included in the tour price, nor are items of a personal nature such as laundry, taxis, telephone calls, excess baggage charges, insurance, portage, drinks, meals and room service, unless specified.

Airfare Conditions

Airfare conditions vary with airlines. Some fares have special requirements and payment deadlines. Please check these with your booking agent.

Booking Arrangements

All booking arrangements must be made through JTB or your local AFTA or licensed travel agent. The person affecting the booking shall be deemed to have accepted the booking conditions on behalf of all persons named in the booking. The contract will be governed by and subject to the booking conditions and to the general information unless stated otherwise in writing and with the authority of JTB all communications will be sent to your agent. Your agent upon receipt of any tour monies shall hold such monies for each and every person named in the booking until the booking is confirmed. At which time those monies shall be paid to JTB within 7 days as a deposit.

Liability of JTB

JTB shall assume liability incurred by the client due to wilful or negligent acts on the part of JTB or its agent in charge of the tour arrangements during the course of the travel. Subject to the matters set out below, all warranties and conditions implied by statute or generally at law are excluded to the maximum extent of the law.

Neither JTB nor its agents make any representation or undertaking as to the services provided by JTB except as set out in this document.

If the services supplied by JTB are supplied subject to the prescribed warranties and conditions of the Trade Practices Act (the "Act") or similar legislation and the Act or similar legislation prohibits the extent to which JTB can exclude, restrict or modify the application of the Act or its liability for breach of those warranties or conditions, JTB's liability for breach of any such condition or warranty will be limited, if such a limitation is permitted under Section 68A at JTB's option to:

- Supply the services again or pay for the cost of having the services supplied again.

- JTB shall not be liable for damages incurred by the client owing to the reasons listed herein under and those similar thereto;
- Natural disaster, war disturbances, acts of terror, uprisings and alternation or cancellation of the tour itinerary due to such causes;
- Accidents of fire related to transportation, accommodation facilities, and alteration or cancellation of the tour itinerary due to such causes;
- Orders of either Japanese or foreign government officials, immigration regulations, isolation as the result of infectious disease and alteration or cancellation of the tour itinerary due to such causes;
- Accidents occurring during the passengers free activities;
- Food poisoning;
- Theft;
- Delays and stoppages, alterations of schedule on route in relation to transportation facilities, and alterations or cancellation of the tour itinerary due to such causes;
- Any liability will be reduced proportionately by the extent to which the wilful or negligent act or omission on the part of the client caused or contributed to the liability, loss, expense or other similar cost; and
- Any case that is beyond the control of JTB and/or the agent in charge of the arrangements;

Law of Contract

The contract is governed in all respects by the law of the state of NSW and any legal action arising under the contract shall be litigated in the appropriate court having jurisdiction in that state. By making any payment towards a booking, the passenger has agreed to the conditions set out in this brochure. JTB has the right to change or cancel the programme if necessary.

WWW.JTBTRAVEL.COM.AU

JTB Australia Pty Ltd

JTB are members of AFTA, IATA and ATAS.

ABN 99 003 218 728

Sydney

ATAS 10896
Level 18, Town Hall House,
456 Kent Street,
Sydney NSW 2000
Phone: 1300 739 330
Fax: (02) 9510-0497
Email: sydr.es.au@jtbap.com

Melbourne (Travel Agent Enquiries only – No walk-ins accepted)

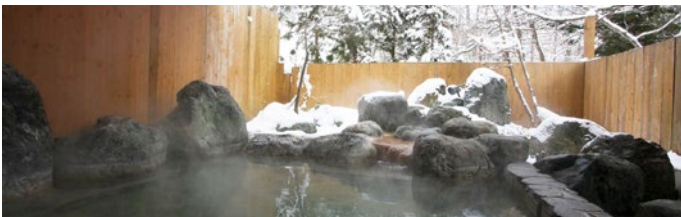
Level 5, 607 Bourke St,
Melbourne VIC 3000
Phone: 1300 739 330
Email: mel.res.au@jtbap.com



SKI Japan

Hakuba

The Nagano region was home to the 1998 Winter Olympics, and the Hakuba area is the most well developed township in the area. With runs catering to all ski levels and all manner of après ski, Hakuba is easily the most popular ski resort in Japan for Australians seeking a powder experience combined with pre and post ski sightseeing in mainland Japan. It is located around 4 hours from Tokyo via shinkansen and bus.



HOTEL DE LAILE HAKUBA

FROM \$114 per person twin share, with daily breakfast

This hotel is one of the most affordable options in Hakuba, a no-frills hotel within 3mins' walk of the nearest lifts.

◆◆◆ 3 STAR



HAKUBA GATEWAY HOTEL

FROM \$225 per person twin share, with daily breakfast (Minimum stay duration applicable)

Located in the centre of the convenient Happo Village and the Hakuba Resort area, an easy walk to Nakiyama Chairlift and accessible to all village services. Offering spacious western style rooms with private bathroom facilities, mini kitchenettes, great views of the ski mountains, and onsite service desk, rental/retail and restaurant. Stay includes complimentary equipment rental with NBS – Standard Skis/boots and poles or Snowboard and boots per person for duration of stay.

◆◆◆ 4 STAR

NOZAWA ONSEN

Another resort in the Nagano region, Nozawa is a sightseeing destination all year round, it being a traditional hot spring resort town. The number of rooms at Nozawa Onsen are in exceedingly short supply, making them a hot commodity for those seeking to combine a traditional experience with their ski holiday.



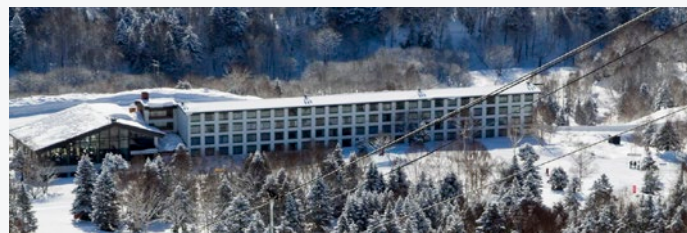
ELIZABETH

FROM \$351 per person twin share, with daily breakfast (Minimum stay duration applicable)

It is located half way between the slopes and the centre of the village. The rooms are a mix of Japanese or western-style, all rooms with private toilet/basin and some rooms with private bathrooms. There is a cosy lobby with fireplace which is a great place to relax after a day on the slopes and there is also a Japanese bath. The Elizabeth Hotel is a non-smoking establishment.

SHIGA KOGEN

An area deserving of more recognition, Shiga Kogen boasts the largest ski area in Japan. It is a national park area, with minimal development; perhaps not the most exciting for those seeking to party, but definitely appealing to families and beginners, with wide open slopes and not too many people.



SHIGA KOGEN PRINCE HOTEL EAST WING

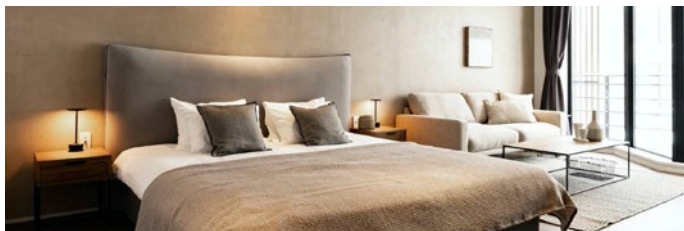
FROM \$278 per person twin share, with daily breakfast

The Prince Hotel at Shiga Kogen has an onsite food court with affordable dining, local buses down to the main Ichinose township, and grants ski-in/ski-out access to the slopes. Enquire about possible early bird stay-pay deals!



NISEKO

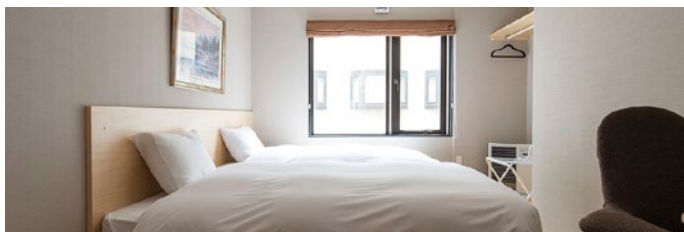
The undisputed King of powder snow, and undoubtedly the number 1 ski destination for Australian travellers. Niseko needs no introduction; you know where it is, and you know why you want to go.



SHINKA NISEKO

FROM \$232 per person twin share, studio room only (Minimum stay duration applicable)

Middle Hirafu's newest development, Shinka Niseko is a chic alpine design collaboration by renowned architect Katsuya Matsunaga and interior designer Ryo Miyagaki. Featuring 14 brand new luxurious condominiums providing exquisite Yotei views, ski lockers and a basement parking area. Located within a short walk of Hirafu's main Hirafu-zaka street, ski lifts, restaurants, and shops, Shinka offers excellent location.



M HOTEL NISEKO

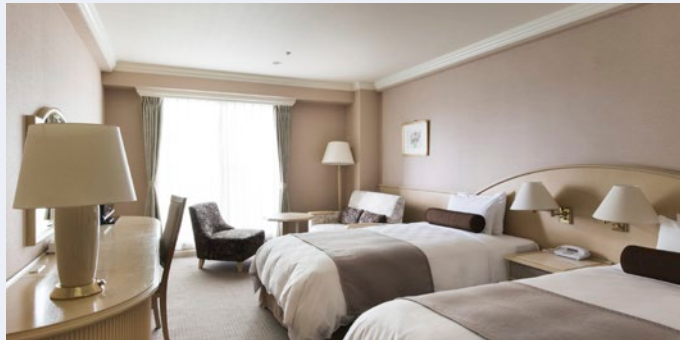
FROM \$244 per person twin share, with daily breakfast (Minimum stay duration applicable)

Featuring fully furnished rooms with a warm and pleasant interior and such amenities as complimentary Wifi, friendly English and Japanese concierge and front desk staff, and internal ski and snowboard storage rooms that are guaranteed to keep your equipment safe and secure.

Unmatched for its quality, ambience and value, M Hotel is the ideal choice for guests who want their stay in Niseko to be both cosy and convenient; M Group's family of services give you more time to experience the local hospitality, and this incredible mountain.

RUSUTSU

Just 50mins by local bus away from Niseko, Rusutsu is Hokkaido's 2nd largest ski area behind Niseko. A fully self-contained ski resort and arguably one of the best choices for off-piste skiing, Rusutsu is in high demand for the right crowd. In summer months, Rusutsu is also highly sought after, with a hugely popular theme park on site, along with golf and other summer activities readily available, it's fun for the whole family!



RUSUTSU RESORT HOTEL AND CONVENTION

FROM \$455 per person twin share, with daily breakfast

Stay in comfort surrounded by nature at Hokkaido's premier resort complex, where there's so much to do all year round

Amusement park and ski-in /ski-out access resort, you can enjoy swimming pool, outdoor activities and so on in summer, ski or winter leisure in winter. Wide variety of restaurants and shops, so that you would stay relax and leisurely.

Rusutsu Resort makes excellent use of Hokkaido's abundant nature to promote the health of our visitors. In an environment surrounded by nature, you can refresh your body and mind with delicious meals, exercise, hot springs, and saunas. You can relieve your daily stress and enjoy a healthy resort lifestyle.

FURANO

Where Niseko and Furano shine in the Aussie-ness of it all, Furano offers a very different experience. The best part of Furano is the homeliness of the town, the sense of immersion and community with the Japanese locals. You won't feel like you're in Australia here. Located in Japan's powder belt, the variety of skiing conditions are multiplied with day trips available to the nearby Asahidake, Tokachidake, Kamui Ski Links, and Tomamu ski resorts.



SHIN FURANO PRINCE HOTEL

FROM \$368 per person twin share, with daily breakfast

This ski-in/ski-out property is located in the Furano Zone of Furano ski resort, secluded away from the main township with exclusive use of the local runs.

EXPERIENCE

SKI

Japan

JTB

Perfect moments, always

December 2024 - April 2025